

# Strengthening Implementation of the Women, Peace and Security Agenda in Nepal

## MID TERM EVALUATION



**FINAL REPORT**  
**15 JUNE, 2015**

### Submitted by

S.W. Nepal Pvt. Ltd. (Scott Wilson Nepal)

P.O. Box 4201

89 Krishna Dhara Marga, Maharajgunj

Kathmandu, Nepal

014410066, 014411156

Email: [info@scottwilsonnepal.com.np](mailto:info@scottwilsonnepal.com.np) / [peacebuilding@scottwilsonnepal.com.np](mailto:peacebuilding@scottwilsonnepal.com.np)

Website: [www.scottwilsonnepal.com.np](http://www.scottwilsonnepal.com.np)

## ABBREVIATIONS

BASE	Backward Society Education
BpfA	Beijing Platform for Action
CAW&Gs	Conflict Affected Women and Girls
CAWG	Conflict Affected Women Groups
CDO	Chief Development Officer
CDS	Creative Development Society
CEDAW	Convention on the Elimination of all forms of Discrimination Against Women
DAP	District Action Plan
DCC	District Coordination Committee
DCSI	Department of Cottage and Small Industries
DHS	Dalit Help Society
DPO	District Police Office
DWC	Department of Women and Children
FGD	Focus Group Discussion
GoN	Government of Nepal
GESI	Gender Equity and Social Inclusion
GRB	Gender Responsive Budget
GRBP	Gender Responsive Budget Planning
HQ	Headquarters
IEC	Information, Education, Communication
IPWA	Inter-party Women Alliances
LDO	Local Development Officer
LDTA	Local Development Training Academy
LGCDP	Local Governance and Community Development Programme
M&E	Monitoring and Evaluation
MCPM	Minimum Conditions Performance Measure
MDG	Millennium Development Goal

MoFALD	Ministry of Federal Affairs and Local Development
Mol	Ministry of Industry
MoPR	Ministry of Peace and Reconstruction
MoWCSW	Ministry of Women, Children and Social Welfare
MTE	Mid-Term Evaluation (referring to this Evaluation)
NAP	National Action Plan
NPTF	Nepal Peace Trust Fund
PSC	Project Steering Committee
RRF	Results and Resource Framework
SGBV	Sexual and Gender Based Violence
SFCG	Search for Common Ground
SM	Social Mobiliser
SIWPSAN	Strengthening Implementation of the Women, Peace and Security Agenda in Nepal
SWN	Scott Wilson Nepal
SWOC	Strength, Weakness, Opportunity, Challenges
TCN	Training Centre Nepal
ToC	Theory of change
UNDAF	United Nations Development Assistance Framework
UNSCRs	United Nations Security Council Resolutions
UN WOMEN	United Nations Entity for Gender Equality and the Empowerment of Women
UPR	Universal Periodic Review
USD	United States Dollar
VAW	Violence against women
VDC	Village Development Committee
VLPC	Village Local Peace Committee
WCO	Women and Children Office
WCSC	Women and Children Service Centre
WPS	Women, Peace and Security

## **TABLE OF CONTENTS**

<b>EXECUTIVE SUMMARY</b>	<b>i</b>
<b>CHAPTER 1 INTRODUCTION</b>	
<b>1.1 BACKGROUND .....</b>	<b>1</b>
<b>1.2 MID-TERM EVALUATION OF SIWPSAN PROJECT.....</b>	<b>6</b>
<b>CHAPTER 2 FINDINGS</b>	
<b>2. 1 Output Progress Review.....</b>	<b>14</b>
<b>2.2 Theory of Change .....</b>	<b>14</b>
<b>2.3 Project Management Modality.....</b>	<b>15</b>
<b>2.4 Specific Findings.....</b>	<b>17</b>
<b>CHAPTER 3 LESSONS LEARNED</b>	<b>34</b>
<b>CHAPTER 4 CONCLUSIONS AND RECOMMENDATIONS</b>	<b>35</b>
<b>4.1 Conclusions.....</b>	<b>35</b>
<b>4.2 Recommendations.....</b>	<b>36</b>
<b>ANNEXES</b>	
<b>Annex 1 Terms of reference</b>	
<b>Annex II Result Resource Framework</b>	
<b>Annex III Key informant Interview with focal persons from the below mentioned government and non-government agencies</b>	
<b>Annex IV MTE detailed field Activity</b>	
<b>Annex V Summary of Team’s role and responsibilities</b>	
<b>Annex VI Data Collection Instrument</b>	
<b>Annex VII Project management modality</b>	
<b>Annex VIII List of key documents consulted/ reviewed</b>	
<b>Annex IX Reference Group list</b>	
<b>Annex X Methodology for sample size calculation</b>	
<b>Annex XI Financial details of the project</b>	

# EXECUTIVE SUMMARY

## A1. Background

This is a Mid Term Evaluation report undertaken by Scott Wilson Nepal (SWN) of **Strengthening Implementation of the Women, Peace and Security Agenda in Nepal (SIWPSAN)** executed by United Nations Entity for Gender Equality and the Empowerment of Women (UN WOMEN) and funded by the Government of Finland in Kailali, Doti and Bajhang districts in the Far Western Development Region of Nepal, in 15 VDCs of the three districts at the local level, and Kathmandu at the national level. The project duration is June 2012 – May 2016 and it targets Conflict affected Women and Girls (as referred to the NAP), former female combatants and survivors of violence against women (VAW). It aims to contribute to the implementation and monitoring of National Action Plan (NAP) on UNSCRs 1325 and 1820 and is aligned with NAP 5 pillars of participation, protection and prevention, promotion, relief and recovery and resource mobilization, and monitoring and evaluation and UNDAF objective 8 and 9.

The overall goal of the SIWPSAN project is 'Women lead and participate in peace, security and governance process at the local level in the Far West Region. The specific objectives of the project area: (i) to enhance the collective capability of national and local level government and other relevant stakeholders to implement and monitor the NAP on UNSCRs 1325 and 1820; (ii) to economically and socially empower conflict affected women and former combatants in three districts through comprehensive assessment of their needs and their operating environment, and innovative programmes and (iii) to enhance the leadership and participation of women in key decision-making structures in the project districts.

Project completed its inception phase and is midway through the 48 months of project implementation.

## A2. The Mid-Term Evaluation (MTE)

### A2.1 Purpose and Objective

The purposes of the evaluation are to: i) ***Determine if the project has achieved its stated outputs and assess whether the outputs are leading towards expected outcomes.*** ii) ***Provide recommendations to UN Women for improvement in the project implementation to maximize its impact.***

In particular, the objective of the MTE was to assess the project through 5 specific criteria of OECD/DAC for evaluating development assistance, which are relevancy, effectiveness, efficiency, sustainability and impact.

### A2.2 Methodology

Evaluation methodology comprised of both qualitative and quantitative data collection, which included desk review of relevant documents, guidelines, progress report; consultative meetings, KIIs with project stakeholders at national, district and local level; field site observation of three project district (two VDC each and three district headquarters) and quantitative survey with 161 project beneficiaries (CAWG, IPWA and VAW survivors).

### A3. Findings

SIWSPSAN project has been well-conceptualized. It has refrained from blue print planning and piece meal approach and has followed bottom up planning. It has conducted situational analysis as part of inception phase to design the project to ensure smooth implementation.

Project progress against the outputs are satisfactory. Most of the activities planned till December 2014 has been successfully implemented by concerned partners but delay in reporting by local partners noted. All project districts have formulated District Action Plan on NAP implementation and developed Monitoring Report on NAP on UNSCRs 1325 & 1820. Progressive steps have been taken in ensuring integration of WPS agenda into local planning process (e.g. District Development Plan).

#### **Relevance:**

Project is context specific and it works in three project districts highly affected by armed conflict. It has identified Conflict Affected Women and Children (CAW/G), former women combatant and other vulnerable women (survivors of VAW) as prime beneficiaries. The demographic composition of the project beneficiaries is inclusive (Source: MTE Survey, 2015). Project has addressed the needs of beneficiaries through three month skill training and has supported to enhance their livelihood. 150 conflict affected women, former women combatants and VAW survivors received skills development training, and 56 graduates (37%) started their own enterprise (Progress Update report, UN WOMEN, January 2014- December 2014). Out of 161 survey respondents, 125 (78%) said that the skill development training was according to their need.

Revival of district level IPWA and establishment of VDC level IPWA was noted to be very successful and relevant in enhancing rights of women and girls.

While participatory bottom up approach was applied during the project planning and implementation phases to identify targeted conflict affected beneficiaries (e.g. IPWN, CAW&G, former combatants, VAW survivors), MTE noted that the project benefits in few cases also went to women who were not directly affected by conflict.

Project has stated the goals, outcomes and outputs which is well articulated in Result Resource Framework (RRF) however, few indicators are ambitious that require revisiting (e.g. 2.2,2.4,2.5, 2.6 and 3.3).

#### **Effectiveness:**

Project is managed in partnership with ten partners at national and local level. Although much of operational gaps was not noted, some space for improvement is coordination and communication between project partners. Project has also framed effective monitoring tools and mechanisms to ensure programme delivery.

The district level presence of UN WOMEN through field staff placed at WCO do have its advantage in terms of support to capacity building of the partners and improved monitoring. However, lack of clarity in roles, responsibilities and expectations of UN WOMEN field project officer to the WCO in all project districts have impacted effectiveness and ownership of the project.

#### **Efficiency:**

Project has utilized 41% of the total budget of USD 712,928 till December 2014. Activities delivered by local partners have been planned reasonably. Time resources and expertise utilized in capacity building training has ensured quality of the trainings. Sub-Regional structure of UN WOMEN in the current context has helped to improve visibility at the regional level and to administer effectively the projects in the region. However, limiting the scope of this structure specific to and solely for SIWPSAN project will not bring efficiency in its role which actually needs to be widened to cover administration and monitoring other additional projects in the region.

UN WOMEN project staff placement at WCO has added value to increase efficiency of the programme delivery by enhancing coordination at the local level, supporting capacity of partners and strengthening monitoring and reporting. However, synergy between WCO and UN project field staff needs to be strengthened in all project districts.

### **Sustainability:**

Some measure to ensure sustainability has been taken by the project by building capacity of DCC members, local partners. Furthermore, project has worked with existing mechanisms like IPWA to sustain project gains. However, project has not taken any initiatives to link the project promoted structure with existing community structures. While the project has contributed in the localization of NAP through capacity building of DCC members, challenges remain. The key ones relate to frequent transfers of the officials weakening the institutional memory as transfers are of office chiefs who are key project actors. This leave the concerned stakeholders concerned on the sustenance of the project deliveries.

Project has supported the capacity building of the project partners to enhance the managerial, technical capacity of the DCC members and local partners to amplify, replicate project agenda and gains, and the partner commitment to take forward the NAP agenda at the local level is visible, and this has further led to strengthening them for potential scale-up in other VDCs as well.

### **Impact:**

Project strategy to work with IPWA has achieved some positive results such as after the revival of IPWA at the district level and establishment of IPWA at VDC of project district, observable changes of target groups regarding leadership enhancement and awareness raising on NAP was noted. Project activities such as peace memorials, community festivals, community dialogues, peace circles were found to be effective in promoting social harmony and reconciliation. Establishment of additional VDC level IPWA in non-project VDCs was found be one of the positive unintended consequences of the project activities.

## **A4. Conclusions**

Project is a pilot multi-tier intervention that has taken a bottom up planning approach, working with multiple partners, and investing on a comprehensive approach. The project intends to contribute to NAP localization of GoN, enhance socio-economic status of conflict affected women, former women combatants and survivors of VAW and create enabling environment to promote local women's leadership.

Overall in the midway, project is on track, however issues like strengthening coordination amongst

project partners, WCO and other actors for localization of NAP, increasing project ownership of GoN officials and strengthening local networks, including capacity building of Social Mobilizers needs to be addressed in the remaining project period.

## A5. Lessons Learned

Strengthening VDC level networks and structures with members from different social and cultural background contribute to institutionalizing women rights agenda. Establishment of IPWA in project VDC has set an example as it contributed in amplifying women's rights agenda at the local level.

The project's focus on improving capacity of the partners led to them being visibly keen in taking forward the WPS agenda even beyond the completion of the project period.

## A6. Recommendations

MTE proposes the following recommendations to UN Women in order to improve the project performance and results:

- SIWPSAN should identify areas of strategic focus (e.g. capacity building of the key stakeholders, NAP localization at different levels etc) for its future programming guidance.
- Formulate an exit strategy that would include more sustained engagement of its partners in post-project scenario specifically, assigning clear roles and responsibility with action points and timeline to further promote the project gains
- SIWPSAN project should enable DCC to be functional and self-sustaining even after completion of project supports. This could be possible through design of appropriate capacity building measures and mechanism to financially sustain DCC activities.
- Ensure that SMs of local partners are equipped with adequate knowledge, information and capacity in order to link project promoted groups with existing structures in the VDC.
- Strengthen coordination, communication between local partners (TCN and DHS/CDS/BASE). Improve collaboration in implementing exit strategy.
- Revisit some ambitious indicators in the RRF (e.g. 2.2, 2.4, 2.5, 2.6 and 3.3) for smooth implementation and monitoring. (Please refer to Annex XII for more details)
- UN WOMEN learning of NAP localization through SIWPSAN could potentially be discussed at policy level and if applicable, advocate for scale up of the activities to additional districts.
- Even during the implementation phase, lessons learnt and best practices need to be documented so as to continually improve the learning process and inform future project design and benefit the wider audience.

## A.7 Summary Table

S.N	Key Findings	Recommendations	Responsible agencies
1	Lack of a concrete plan to sustain	Prepare an exit strategy for the	UN WOMEN



	project gains	project	
2	Weak capacities for effective social mobilization	Capacity building of SMs of local partners	UN WOMEN and Local partners
3	Lack of inter-ministerial coordination; effective documentation, institutional memory; project ownership among local authorities	Formulate Project Management committee (PMC)	MoWCSW
4	Lack of adequate strategic guidance by PSC	Take ahead discussion regarding coordination between different line agencies for NAP localization	MoPR/ PSC
5	Lack of effective communication, coordination and sharing amongst each other.	Increase joint meetings, regular updates	Local partners
7	Documentation of lessons learnt and periodic sharing to be improved	Organise regular reporting and information collection to feed to longer term programme design and implementation improvements.	UNWOMEN

# CHAPTER 1: INTRODUCTION

## 1.1 Background:

Strengthening Implementation of the Women, Peace and Security Agenda in Nepal (SIWPSAN) is a four-year initiative of the UN Women Nepal to promote women's leadership and participation in the peace, security and governance process, mainly by supporting the implementation and monitoring of the National Action Plan (NAP) on UN Security Council Resolutions (UNSCRs) 1325 and 1820. The project receives financial support from Government of Finland.

The project commenced in July 2012 and is scheduled to complete by May 2016 and targets to support 1,808 direct beneficiaries (270 skill development, 300 Women Conflict Victims and women ex-combatants, 734 conflict victims, 420 VDC Inter Party Women Alliance (IPWA), 84 District level IPWA, 42 DCC members, 26 Police officers).<sup>1</sup>

The project is implemented in three districts of Far Western Development Region, which were severely affected during the decade long armed conflict. A total of 1,558 people were killed in the region and 6,758 people were displaced. With literacy rate of 66 percent (male 79 percent and female 55 percent) for those over six years old (Census, 2011), agriculture is the main source of livelihood for most households in this region. A largely male dominated society where Violence Against Women (VAW), polygamy and child marriages are commonplace, Far-west is also characterized through existing discrimination between men and women at individual, family and institutional level. Women's participation in the civil service and politics is also very low and gender and caste based discrimination remain serious obstacles to ensure that achievements toward the Millennium Development Goals are shared equally among all groups. (UNFCO, Dadeldhura, 2011)

The three highly conflict affected districts covered by the project are: i) Bajhang (total population: 211, 74);ii) Doti (total population: 195,159); and iii) Kailali (total population: 775,709)<sup>2</sup>. The project covers five Village Development Committees (VDCs) in each district. These districts are mostly ranked low in District Development Indicators (women empowerment and poverty indicators) which are 61<sup>th</sup> and 66<sup>th</sup> (in Doti) 74<sup>th</sup> and 70<sup>th</sup> (in Bajhang) and 42<sup>nd</sup> and 31<sup>th</sup> (in Kailali) out of the total 75 districts.<sup>3</sup>

---

<sup>1</sup> Project Progress Update, UNWOMEN, Feb 18, 2015

<sup>2</sup> Source: Central Bureau of Statistics, 2011

<sup>3</sup> Situation Analysis Report, 2013

**Figure 1.1:** Map of the project districts covered by SIWPSAN



The project is designed to support national priorities and commitments in relation to gender equality and women's empowerment, especially it aims to contribute to the implementation and monitoring of NAP on UNSCRs 1325 and 1820, particularly five pillars (participation, protection and prevention, promotion, relief and recovery, and resource management, monitoring and evaluation). It seeks to align with CEDAW Concluding Observations; GON's current Three Year Plan; Nepal Peace and Development Strategy (2010-2015); Local Governance and Community Development Programme (LGCDP) ; UNDAF 2013-2017 (Outcomes 8 and 9) and UN Women Nepal Strategic Plan 2014-2017 (DRF 3 and 4) and MDG on promoting gender equality and the empowerment of women. Following the bilateral consultation between the governments of Nepal and Finland in November 2010 where it was agreed that both government would collaborate in the area of WPS, the project was conceptualized to contribute to the implementation of both countries' NAP on UNSCR 1325 on WPS. Furthermore, the project intends to promote national ownership, capacity development and institutionalization, inclusiveness, coordination and partnerships and knowledge generation and management. The project also works with GoN partners such as MoWCSW (Ministry of Women, Children and Social Welfare) to contribute to ongoing efforts in advancing women's human rights.

Similarly, the project is aligned with the UN Women global priorities, particularly to support stronger incorporation of gender equality commitments in conflict and post- conflict responses. Similarly, it also relates to six Strategic Impact as illustrated in the strategic plan 2014-2017, particularly on the Impact 4 (peace and security and humanitarian action are shaped by women's leadership and participation).

Likewise, UN Women Nepal is the current chair of the Peace Support Working Group (PSWG) which is a consortium of donors and UN agencies working collaboratively towards the advancement of the WPS agenda in Nepal for which SIWPSAN also contributes.

SIWPSAN stipulates that its overall goal is women lead and participate in peace, security and governance process at the local level in Far Western Region.

The specific objectives of the project area: (i) to enhance the collective capability of national and local level government and other relevant stakeholders to implement and monitor the NAP on UNSCRs 1325 and 1820; (ii) to economically and socially empower conflict affected women and former combatants in three districts through comprehensive assessment of their needs and their operating environment, and innovative programmes; and (iii) to enhance the leadership and participation of women in key decision-making structures in the project districts.

The project aims to realise the above objectives through the following three outcomes:

- i. Enhanced capability of Ministry of Women, Children and Social Welfare (MoWCSW) and District Coordination Committees (DCCs) to implement and monitor the NAP on UNSCRs 1325 and 1820 at the national and local level;
- ii. Economically and socially empowered conflict affected women and girls and ex-combatants; and
- iii. Strong leadership and participation of women in key decision-making structures.

Some of the project outputs include: Gender unit staff of MoWCSW and DCC members have improved capacity to implement and monitor NAP; develop effective coordination and monitoring mechanism between MoPR and MoWCSW for the implementation of NAP at local level; collaboration between DCCs and civil society groups to implement NAP commitments; generate success stories of conflict affected women and girls and former women combatants; VDC level IPWA established and functioning effectively; women leaders in the districts take on leadership roles to promote peace and development.

The project has formulated Results Resource Framework (RRF) with indicators, outputs and outcomes. *(Please refer to Annex II for details)*

It is implemented with support from the following partners:

- I. **Government agencies:** Ministry of Peace and Reconstruction (MoPR), Ministry of Women, Children and Social Welfare (MoWCSW), Local Development Training Academy (LDTA)
- II. **Field based organizations:** Backward Society Education(BASE) in Kailali, Dalit Help Society (DHS) in Bajhang, and Creative Development Society (CDS) in Doti
- III. **National Training Institute** for skill development training in the project district: Training Center Nepal
- IV. **National partner** for providing M&E support to entire project partners and developing knowledge product : Search for Common Ground (SFCG)
- V. **National partner** for providing capacity building support to district partners: Saathi
- VI. **National partner** for preparing video documentaries: Krishna Consultancy

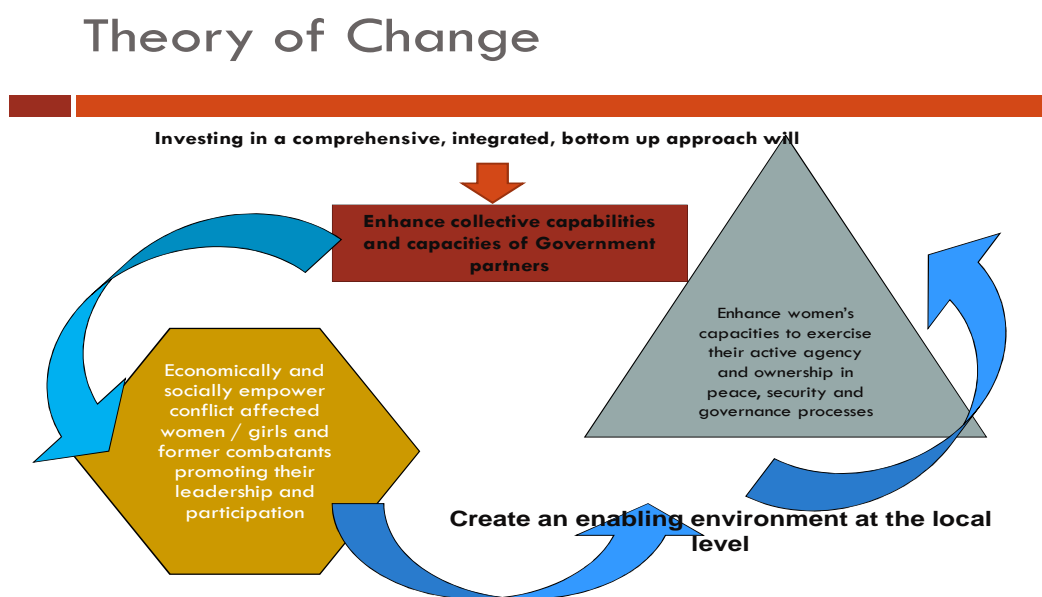
### 1.1.1 Theory of Change

The Theory of Change (ToC) was built in the project document. It was developed during the project design phase to create a better understanding of the project concept.<sup>4</sup> The project ToC consists of the following premises (also depicted in the figure 1.2 below):

A broad range of investment following a comprehensive and integrated approach and with a participatory bottom-up focus is necessary to achieve a set of related results;

- this will support development of not only the collective capabilities and capacities of the MoWCSW and DCCs at the national and local levels to implement and monitor the NAP on UNSCRs 1325 and 1820, but also economically and socially empowers conflict affected women and girls and former combatants, and promotes their leadership and participation in key decision-making structures;
- this approach will also contribute to creating an enabling environment for women's participation in peace building and to addressing their protection, prevention, relief and recovery rights and needs;
- this will additionally enhance women's capacities to exercise their active agency and ownership in peace, security and governance processes at the local level in the Far West Region of Nepal.

**Figure 1.2: Project Theory of Change (ToC)**



Source: Project Document, UN WOMEN

<sup>4</sup> The ToC was already built-in the project document and the MTE envisages broadly assessing the ToC examining the linkages as outlined. However, the MTE team wasn't involved in formulating or reconstructing the ToC.

### 1.1.2 Project Strategy

The project is designed to assist the GON in its efforts to implement the NAP on UNSCRs 1325 and 1820 at the national and, in particular, at the local level, addressing the particular pillars of NAP as detailed in the below table.

**Table 1.1: Project Strategy<sup>5</sup>**

Participation	Protection & Prevention	Promotion	Relief and Recovery	Resource Management, M&E
<ul style="list-style-type: none"> <li>• Capacity building of Gender Unit/ MoWCSW, DWC, WCOs and DCCs</li> <li>• Development of relevant guidelines</li> <li>• Facilitate Implementation Committee meetings</li> <li>• Establish and capacitate VDC level inter-party women networks</li> </ul>	<ul style="list-style-type: none"> <li>• Data collection of conflict affected women, former women combatants and women victims/survivors of SGBV</li> <li>• Form and capacitate VDC level network/ groups of conflict affected women and former women combatants</li> </ul>	<ul style="list-style-type: none"> <li>• Knowledge generation on peace building and women's security issues through learning visits, case studies and IEC materials</li> <li>• Organize interactions and workshops with DCCs and government stakeholders on women, peace and security agendas</li> <li>• Organize peace memorials and VDCs level awareness campaigns</li> <li>• Capacity building of district level inter-party women's networks</li> </ul>	<ul style="list-style-type: none"> <li>• Provide trainings of livelihood skills, vocational skills and entrepreneurs hip development</li> <li>• Follow up and refresher trainings on skills development</li> </ul>	<ul style="list-style-type: none"> <li>• Support on-going monitoring of NAP implementation by MoWCSW, DWC, WCOs and DCCs</li> <li>• Provide technical support in drafting annual NAP on UNSCRs 1325 and 1820 monitoring report</li> </ul>

<sup>5</sup> Source: Project Document, SIWPSAN Project, UN Women

### 1.1.3 Project Approach<sup>6</sup>

The project adopts a **participatory planning approach** as against “blueprint planning” to ensure participation of project stakeholders in planning of activities.

The project also applies a **bottom-up approach** which implies a bottom-up understanding of peace. As the project document states, Nepali women understand “peace” more as a practical strategy to implement down-to-earth human security, encompassing economic, food, health, environmental, political, social, and personal security, among others, than simply as the absence of armed violence. For women, safe access to fields, markets, and schools are as important as establishing justice in remote districts or ending impunity for perpetrators, be they regular armed forces, police, Maoists, or ordinary criminals.

**The project’s multi-pronged approach** involves not only enhancing women’s capacities to exercise their active agency and ownership through economic and social empowerment initiatives and promotion of women’s leadership and participation in decision-making structures, but also creating an enabling environment for women’s participation in peacebuilding and to addressing their protection, prevention, relief and recovery rights and needs through enhancing the collective capabilities and capacities of the national and local level Government agencies.

The project adopts a broader concept of **capacity development** than what is commonly limited to formal training. Capacity development has been an element in a broader and more systematic approach to build the competencies and capabilities of institutions and groups to enhance the sustainability of the project’s approach. **Capacity development of both rights bearers and duty holders in effect forms a key element of the project.**

## 1.2 Mid-term Evaluation of SIWPSAN Project

In line with the approved project document of SIWPSAN (2013), UN Women agreed on a Mid - Term evaluation to be carried around the midway of the 48 month project period that commenced in June 2012 and is designed to complete in May 2016. Evaluation is expected to contribute to further improving the project relevance, effectiveness, efficiency, sustainability over the remaining project period.

### 1.2.1 Evaluation Purpose and Objective

The purpose of the mid-term evaluation of the project “Strengthening and implementation of women, peace and security agenda in Nepal” is to:

- Determine if the project has achieved its stated outputs and assess whether the outputs are leading towards expected outcomes.

---

<sup>6</sup> Source: Project Document, SIWPSAN Project, UN Women

- Provide recommendations to UN Women for improvement in the project implementation to maximize its impact.

The evaluation findings are expected to support UN Women and project partners to formulate necessary decisions and adjustments as required in design of the project for remaining one and half years of project period. The evaluation findings will also be used as guidance for tracking the project results to lead up to its final evaluation to be undertaken in May 2016 at the end of the project period.

The MTE is carried out with the following specific assessment objectives, as stated in the Terms of reference (ToR as presented in Annex I):

**Relevance:** Extent to which project design is appropriate to raise beneficiaries' requirements, national priorities and partners' and donors' policies and plan;

**Effectiveness:** Extent to which project outputs were achieved, or outcomes are expected to be achieved, taking into account their relative importance;

**Efficiency:** Measure of how economically resources/inputs (funds, expertise, time, etc.) are converted to results;

**Sustainability:** The probability of continued long-term benefits from the project, the resilience to risk in realization of net benefit flows over time; and

**Impact:** Observable changes of target groups and gender equality as a result of the project interventions.

### 1.2.2 Scope of evaluation

The scope of this mid-term evaluation is guided by the evaluation questions provided in the ToR (Annex I). Evaluation covers the period of project inception phase and implementation phase (26 months in total).

The MTE team has assessed the Theory of Change (ToC) for its clarity and appropriateness of its logic to guide the project design and implementation. ToC was formulated during the project inception phase in consultation with different stakeholders. ToC in this respect forms a central chord of the project. Accordingly, it has been broadly reviewed as to get an overview of the linkages within the ToC.

### 1.2.3 MTE Methodology and Process

The MTE process was carried out from February to April 2015 (Details in Annex IV). . MTE adopted both qualitative and quantitative data collection methodology.

It commenced with desk review of existing documents, key policy documents, guidelines, reports, records, minutes and reference materials were carried out. Consultative meetings with UN Women and Reference Group (please refer to Annex IX for more details on Reference Group) were held at the national, regional and district level wherein discussions were carried out on project progress, stakeholder's impressions, monitoring mechanisms, implementation



gaps/challenges encountered and suggestions for improvement<sup>7</sup>. Similarly, the evaluation also included KII at the central, district and VDC level with project stakeholders as detailed in the table 1.2 below. To complement the qualitative findings, quantitative survey was also carried out with 161 project beneficiaries (CAWG, IPWA) from the selected VDCs and headquarters<sup>8</sup>.

Field site observations (e.g. Safe House, Women and Children Service Centers, UN Women Sub-Regional Office in Dadeldhura district, Project Partners) were also carried out as part of the evaluation. As listed in the following table, a total of 40 key informants were interviewed/ consulted, FGDs were carried out with 224 beneficiaries and 161 beneficiaries were surveyed as part of the evaluation. *(Please refer to Annex III for checklists on Consultations/ KIIs and survey questionnaire).*

**Table 1.2: Participants of quantitative and qualitative assessments<sup>9</sup>**

Methodology	Source	Central and Regional Level	Doti	Bajhang	Kailali	Total
Key Informant Interviews (KIIs)	DCC members (CDOs, WDOs, LDOs, DPO In-charge, LPCs); VLPC	12	9	10	9	40
Focus Group Discussions (FGDs) Participants	CAWG (CAW&Gs, former women combatants, VAW survivors); IPWA	0	65	100	59	224
Beneficiaries' Survey	Project Beneficiaries (CAW&G, former women combatants, IPWA)	0	41	77	43	161
Total		12	115	187	111	425 <sup>10</sup>

<sup>7</sup> MTE team carried out field study from 3<sup>rd</sup> March- 16<sup>th</sup> March in three project districts. Further details provided on Annex IV.

<sup>8</sup> Among 161 individuals approached by the MTE, all of them agreed to participate in the survey questionnaire.

<sup>9</sup> Further details on Participants of quantitative and qualitative assessments on annex IV.

<sup>10</sup> This total number represents the number of participants the MTE met during the evaluation, however, in some cases, the participants may have overlapped.

To ensure quality of data collection and analysis the following steps were applied:

- The MTE team<sup>11</sup> was guided by the “UNEG Integrating Human Rights and Gender Equality in Evaluation Guidance Document” wherein the values of non-discrimination, inclusiveness, accountability and participation in terms of rights-holder, duty bearers, etc. during the evaluation process was ensured. Likewise, the evaluation considered if issues related to gender equality and social inclusion were taken into considerations during various stages of project execution such as activity planning, beneficiaries' selection, partner selection and project staff selection. Guided by the UNEG document, the team also assessed if gender and ethnicity based disaggregated data has been managed, participation of and consultation with all relevant stakeholders were ensured during project implementation. The MTE was also guided by these approaches during the evaluation process. For example, during FGDs the team ensured that all of the respondents' voices were catered to. The MTE team endeavored to be gender and culturally sensitive and to respect the confidentiality, protection of source and dignity of those interviewed. The MTE team was gender balanced to ensure that gender sensitive issues are handled accordingly and field mobilization was also planned to include both male and female members in the team. Likewise, the team also made efforts to capture voices of men and women alike to the extent possible.<sup>12</sup>
- Evaluation questions were based on guiding questions and additional sub questions <sup>13</sup>were also formulated to ensure that issues and concerns raised are captured. An evaluation matrix was developed which included evaluation questions, indicators, collection method, data source and sampling. The evaluation matrix formed basis during the entire evaluation process to yield answers to the given questions.
- For the evaluation purpose, data (qualitative and quantitative) collection tools were developed which included different checklists for different stakeholders such as at central level, district level, local partners and questionnaires for the survey.
- Along with identified Key Informants, the MTE team also conducted interviews and meetings with VDC Secretary, VLPC member, LGCDP SM and District Governance Expert (LGCDP) in order to triangulate data.
- Following the field visit, KIIs/ Consultative meetings at the Central level was also conducted with stakeholders such as Government of Finland, UN Women Project Team, TCN and MoWCSW to verify district level information and to collect central level information.
- The survey questionnaire consisted of a page on interview guidelines that included briefing on the purpose and procedure of the evaluation, Benefits and incentives, Right to refuse and Confidentiality. Contact details of the MTE team was also provided to the respondents. *(Please refer to attached Annex VI for survey Questionnaire)*

---

11 The MTE team comprised of four team members which included a team leader and four team members, including a statistician and a research assistant. SW Nepal Pvt. Ltd. was commissioned to carry out the MTE for SIWPSAN project. Details of the MTE team are provided in annex V.

<sup>12</sup> As the project exclusively targets women (CAW&G, VAW Survivors and female former combatants), the FGD participants and beneficiaries survey respondents are women.

<sup>13</sup> Details of the evaluation question is provided in Chapter 2 under the heading of Specific Findings.

- Using proportionate random sampling method (Cochran Methods), 161 survey respondents were selected. (Please refer to Annex X for more details)
- During the field work, review and reflection within the team was conducted everyday to ensure data consistency and information cross sharing.
- After the field visit, cross sharing meetings were organized for four consecutive days at SW Nepal Office to validate findings and observations from the field. During these meetings, information received through KIIs, Consultative meetings, FGDs and Survey findings were triangulated to ensure data reliability.

#### 1.2.4 Geographical Coverage

Random judgmental sampling methodology has been adopted for the selection of VDC for the MTE. While selecting specific visit sites, the following key points were taken into consideration:

- The areas selected are balanced in that they reflect both the success stories as well as areas where things may not have worked well.
- The areas selected adequately represent backward/underprivileged communities.
- The independence of the team to identify the sites with minimum influence from the project implementing partners.

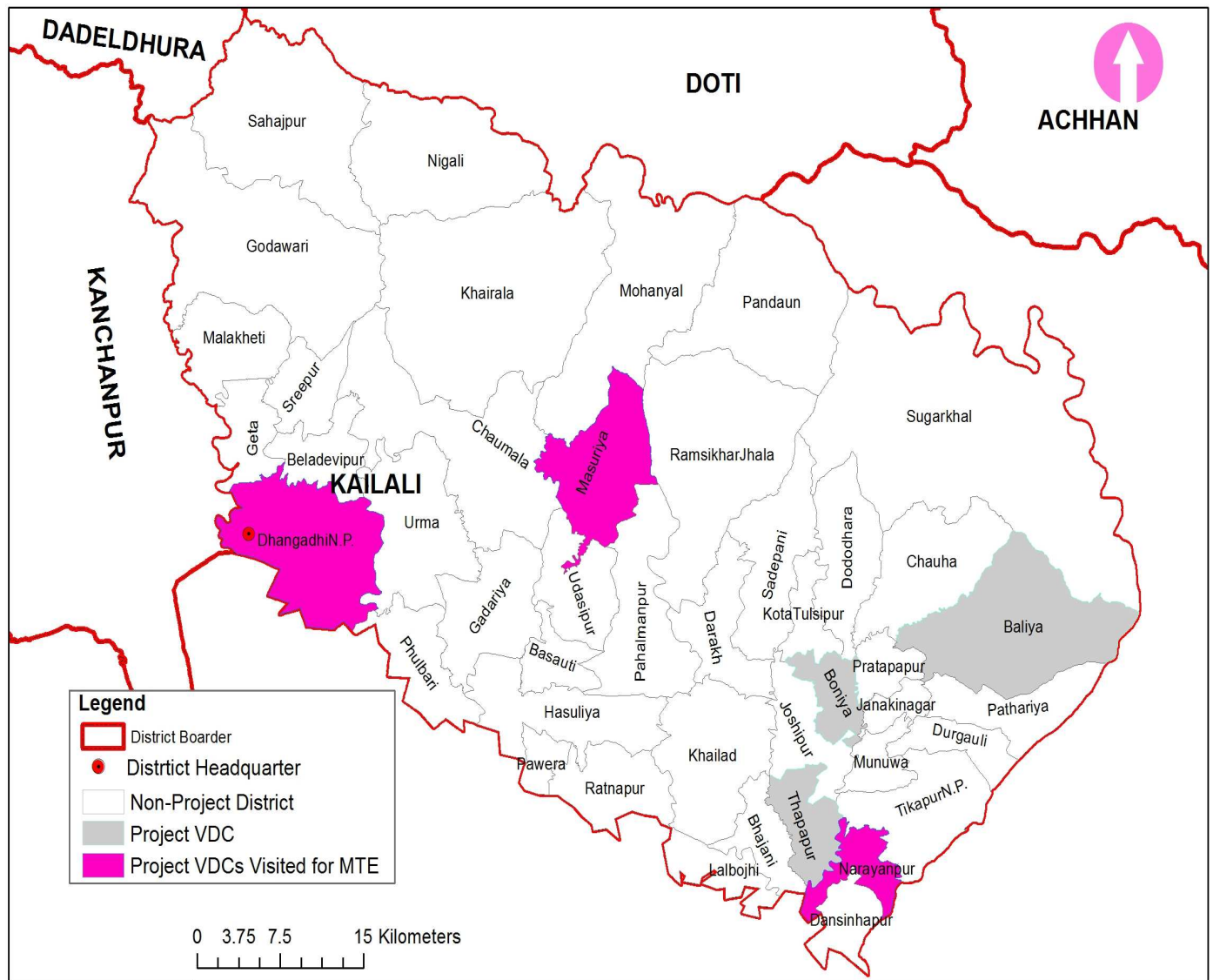
The team visited 2 VDCs and a headquarter in each district among the 15 project VDCs.

The detail of the districts and subsequent VDCs visited by the MTE is as follows:

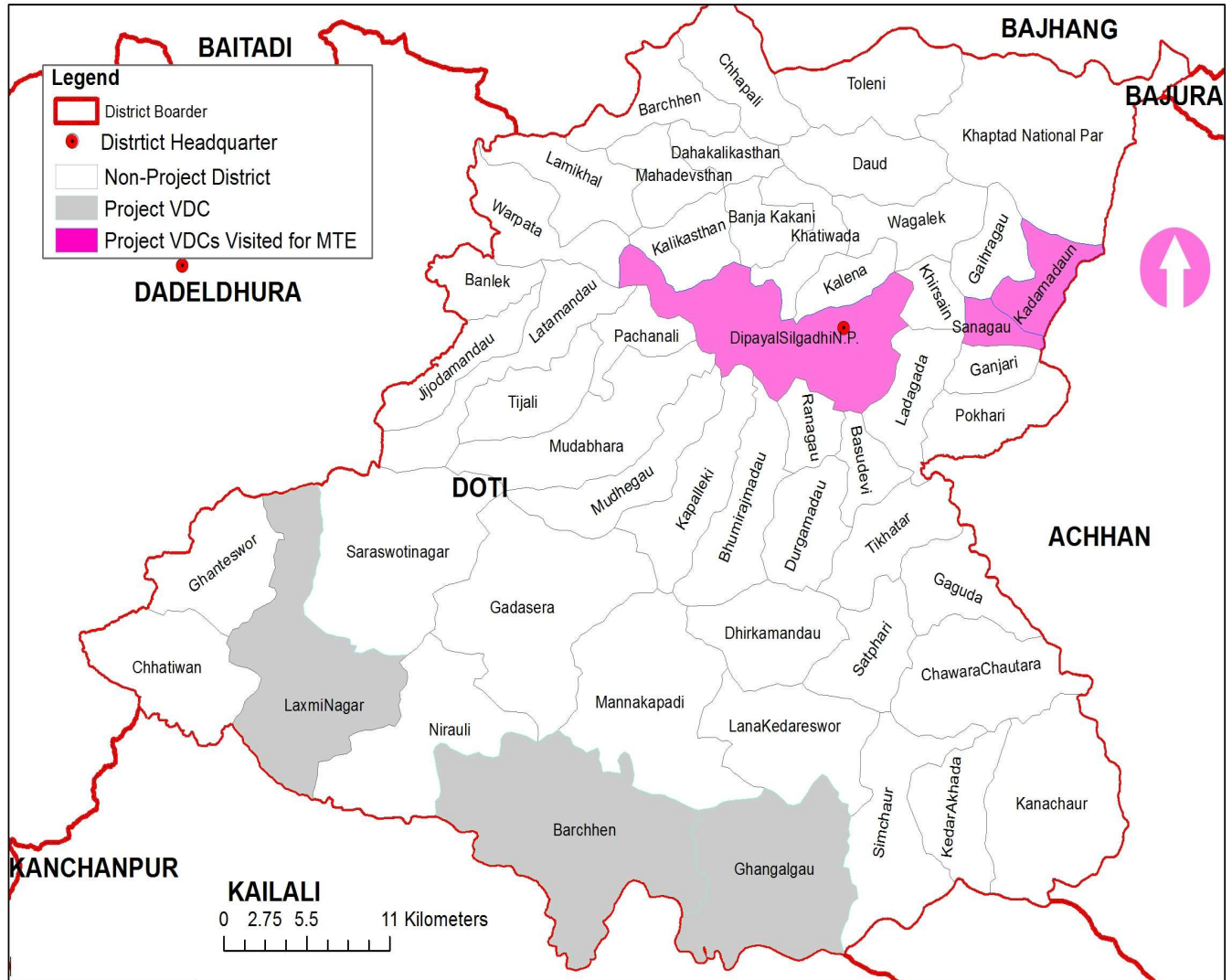
**Table 1.3: Districts and subsequent VDCs visited by MTE team**

Bajhang	Doti	Kailali
Chainpur (HQ)	Silgadhi (HQ)	Dhangadi (HQ)
Subeda	Sanagaun	Masuriya
Rithapatha	Kadamandu	Narayanpur

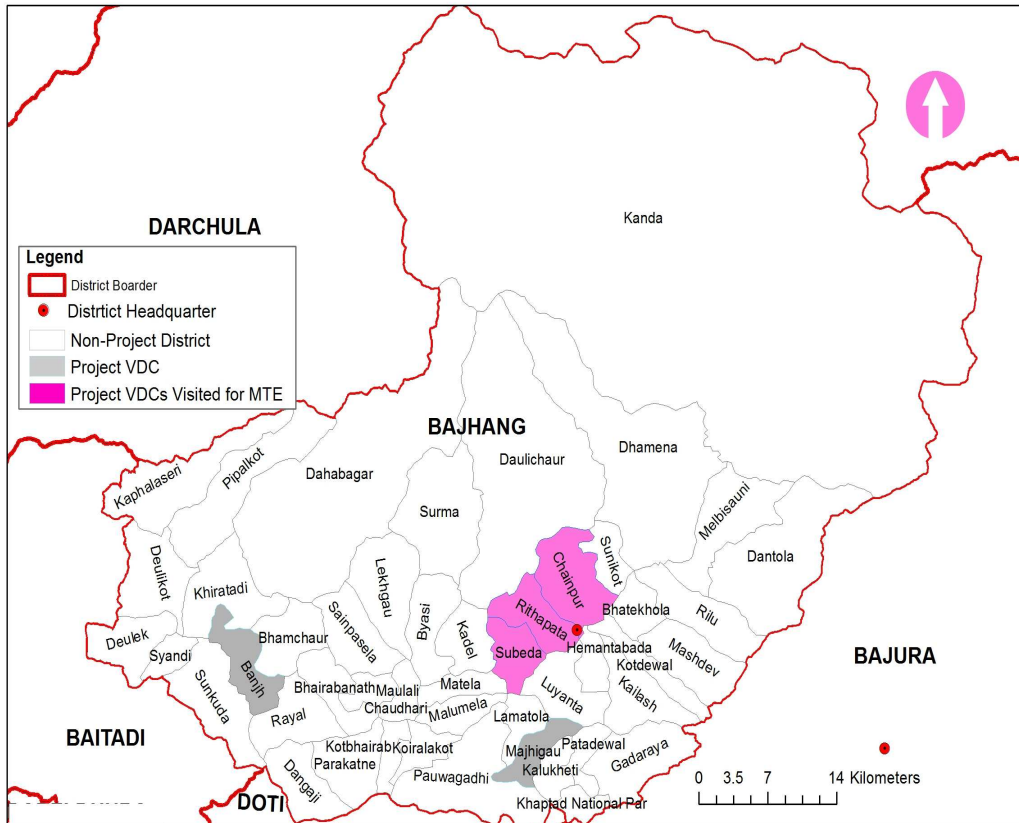
Figure 1.3 Map of Project VDCs and VDCs visited by the MTE team (Kailali)



**Figure 1.4 Map of Project VDCs and VDCs visited by the MTE team (Doti)**



**Figure 1.5 Map of Project VDCs and VDCs visited by the MTE team (Bajhang)**



### 1.2.5 Limitations of the MTE

The evaluation was undertaken within the following limitations:

- Due to lack of baseline value in some indicators (e.g. outcome 2, output 2.3 second indicator, output 2.4 first indicator, output 2.6 second and third indicator, output 3.2 second indicator) within Results Resource Framework, generating corresponding information was challenging.
- The progress measured against the outputs are largely based on information provided by local project partners and available progress reports. However, to address this, the MTE team has tallied the provided information with other information sources such as KII and FGDs.
- As the MTE covered only the headquarter and 2 VDCs of each project district, some issues associated with VDCs which were not visited could have been left out.
- Some key local stakeholders such as VLPC members, VDC Secretaries in some VDCs were not available to meet or discuss, as is often the case at the local level across the country.
- Most of the stakeholders (CDO, LDO, VDC Secretary) were not fully familiar about the project due to frequent transfers and hence, there were some difficulty in generating information.

## CHAPTER 2: FINDINGS

This section covers three aspects of the findings - the first shows the progress on Results and Resource Framework (RRF) indicators, followed by a section on ToC and Specific Findings on OECD/DAC 5 criterion.

MTE findings presented in this section are based on desk review, focus group discussions, key informants interviews, survey and meetings/consultations carried out with the concerned stakeholder listed in this report.

### 2.1 Output Progress Review

The MTE assessed progress against the output (except for 1.6, 2.5 and 3.3 i.e. 12 outputs out of 15) as per the ToR.

The output progress focusing on awareness raising and knowledge enhancement of NAP on UNSCRs 1325 & 1820 among the beneficiaries and project stakeholder was found to be satisfactory. Furthermore, implementation and monitoring of NAP through enhancing coordination among local level NAP stakeholders to localize NAP is also progressive. Skills development training to CAW/G, former women combatants and VAW survivors has contributed to improve their livelihood through income generation. Revival and establishing of VDC level IPWA and formation of CAP women groups has contributed to strengthening local level women networking and promotion of their leadership.

The Results Resource Framework has been detailed in the table provided in Annex II, that includes progress till December 2014.

### 2.2 Theory of Change

The theory of change for the SIWPSAN project implies that if investments are made in a comprehensive and integrated approach with participatory bottom-up focus (such as local level implementation modality, partnership at multiple level-national, district and local) tied to three specific outcomes) will result into goals/change envisioned.

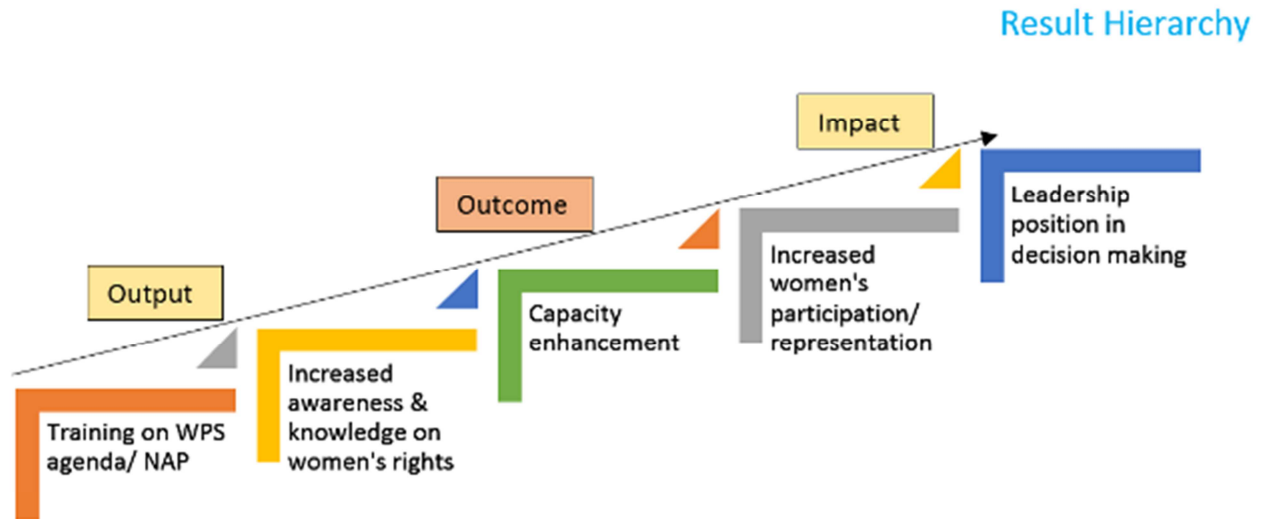
MTE team broadly assessed<sup>14</sup> the TOC in line with the set assumption. The TOC seems more or less consistent with the assumptions and outcomes. The MTE found that the project activities such as leadership training has led to increase in awareness among beneficiaries about WPS agenda which has encouraged women to take leadership positions. Therefore, stated outputs are contributing to some extent to achieve expected results. However, detailed assessment is required to validate the ToC.

Similarly, there is a scope of further detangling of linkages of output to the expected results such as it can be further clarified on how enhancing the capacities of DCC will enable women to participate. An example of result hierarchy, where specifics can be changed as required, is presented below:

---

<sup>14</sup> While the ToC was assessed broadly to understand linkages between interventions, outcomes and results, the evaluation didn't comprise of in-depth review of the ToC as per the ToR.

**Figure 2.1: Result Hierarchy**



Similarly, as explained in the figure above, causal pathways towards achieving said changes in the ToC can be detailed out ( e.g. socially and economically empowered CAW&Gs will create an enabling environment at the local level for women's participation in peacebuilding-evidences on how can it be strengthened). The ToC for SIWPSAN project can further demystify on how project activities are connected with each other and how they contribute to achieving results at different levels of output, outcome and impact.

It may also be easier to unfold the ToC if written as a statement in the following way:

"IF [we do this action, with these actors/ beneficiaries, at this time] THEN [This will be achieved] BECAUSE [the logic behind the intervention is placed here]."

Some specifics of the project are found to be missing in the ToC. For example, though VAW survivors are project beneficiaries, they were found to be missing from ToC. Similarly, IPWA linkages can also be further elaborated. Some disconnect between outcomes and ToC can be addressed such as while the outcome 1 mentions 'capacities', ToC includes 'capabilities' in addition to 'capacities'.

### 2.3 Project Management Modality

- Project is managed by project management team (PMT) of UN WOMEN based in Kathmandu led by Women, Peace and Security Unit Manager in partnership with MOWCSW, MOPR, DWC, LDTA. Project Steering Committee is established to oversee the implementation of the project, to provide strategic guidance, policy support, project direction and to ensure inter-ministerial coordination. The DCCs in three project districts work as the District Level Project Steering Committee (DPSC) for smooth implementation of the project activities.



- UN WOMEN has contracted with TCN, SFCG and SAATHI to provide series of capacity building training to local partners and has contracted with local partners to undertake the main lead to implement activities in the three districts.
- UN WOMEN has established sub regional office in Dadeldhura towards increasing its presence in districts such as through coordination with local authorities and partners and monitor UN WOMEN project of Far West Region for example, through monitoring visits<sup>15</sup>. UN WOMEN provides technical support to MOWCSW, DWCO, WCO and local partners. UN WOMEN three project field Officers are placed in Women Children Office at district level for the same. They also provide support and monitor local partners to ensure timely project delivery and smooth implementation of the project.
- SIWPSAN project is implemented at three levels to achieve its intended outcome. At national level, it partners with MOWCSW which is the prime entity of GoN to foster gender equality and women's empowerment and lead in NAP localization. MOWCSW also implements GoN international commitment on CEDAW, BPFA, GoN GESI strategy.
- At district level it works with District Coordination Committee (DCC) and WCO through ministries to contribute to NAP implementation and monitoring. UN sub regional office is established to foresee programmatic support and administrative procedure of different ongoing project and increase its visible presence. UN WOMEN Project staffs are placed in WCO at the project districts to enhance monitoring and coordination for smooth implementation of the project.
- At the VDC level UN WOMEN has contracted with local partners based in the district to increase awareness on NAP and WPS issues and enhancing women's leadership to influence decision-making by strengthening community networks.
- MTE finds the implementation modality complex in terms of clear reporting channels, clear functional administrative relationship across all partners which has affected effective communication and coordination among all partners. Project staffs have functional relationship with WCO but administrative relationship with UN WOMEN sub-regional office; DCC has functional relationship with WCO and WCO has functional relationship with MoWCSW; and documentation within the MoWCSW about the project is weak. There is also a need to strengthen PSC's role on providing effective strategic guidance and policy support, and to strengthen inter -ministerial coordination. Coordination between TCN and local partners is weak wherein both the partners are delivering the project activities with nominal communication. However, as the project intends to work with multiple stakeholders and increase their buy-in of the project, through joint monitoring visits, it has helped increase interface of the local people and local authorities. *(Please refer to Annex VII for the project management modality chart).*

---

<sup>15</sup> Based on the discussion with UN WOMEN sub-regional office in Dadeldhura

## 2.4 Specific Findings

### 2.4.1 Relevance

#### Evaluation Questions:

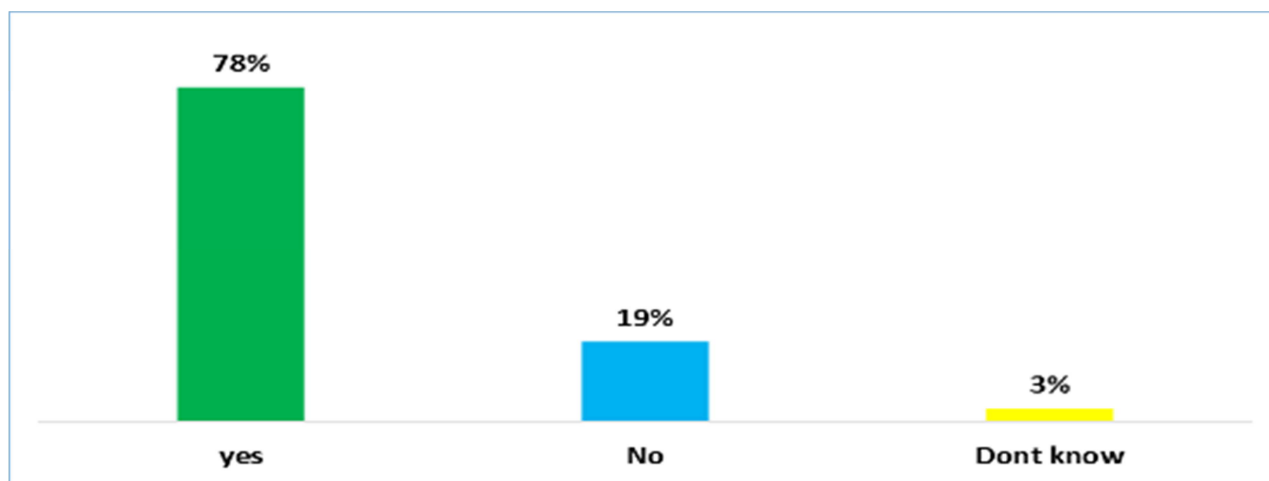
1. Are the project objectives addressing identified rights and needs of the target group(s) in national and regional contexts? How much does the project contribute to shaping women's rights priorities in accordance to CEDAW, BPfA, UNSCRs 1325 & 1820, MDGs, and with UN Women's Global and National Strategic Plan?
2. Has an appropriate beneficiary population been determined? What beneficiary needs are to be addressed? How were the priorities identified and who was consulted.
3. Do the activities address the problems identified?
4. Is the project design articulated in a coherent structure? Is the definition of goal, outcomes and outputs clearly articulated?

#### Findings

- With regards to the *relevancy* of the project, responses from the beneficiaries were positive. Majority of the participants who undertook skills development training stated that the training is according to their need (78% of the total respondents) as demonstrated in the following figure:

**Figure 2.2** Percent of respondent sharing skill development training is according to their need

(n=32)<sup>16</sup>



Source: MTE SIWPSAN Beneficiary Survey, March 2015

- Most emphasized during FGDs that in the post-conflict scenario where needs of the conflict victims (such as inclusion into GoN relief and support, and socio-economic reintegration of ex-combatants, including [VMLRs](#)) were not adequately met, the project has contributed to

<sup>16</sup> The total number of respondent for skill development training was 32.

providing some relief to conflict affected women and girls. Similarly, many also stated that some project activities contributed to some extent in mitigating social discordances in the community and improving social harmony such as through peace memorials. Likewise, violence against women, including polygamy, child marriage are rampant in the project districts and MTE notes that project contributed to raising awareness about women peace and security issues among women and in improving their access to justice. In particular, revival of district level IPWA and establishment of VDC level IPWA was noted to be very successful and relevant in enhancing rights of women and girls.

- The project objectives relate well with the rights and needs of target groups ( right-holders), in terms of social and economic empowerment, advancing women's rights, social reconciliation of the former combatants and CAW&Gs. While participatory bottom up approach was applied during the project planning and implementation phase to identify beneficiaries from target groups (e.g. IPWN, CAW&G, former combatants, VAW survivors), MTE noted from its field communications that the project benefits in few cases went to those who weren't directly affected by the conflict. Some KII respondents expressed that those women who were not directly affected by conflict have benefited from the project.
- In Bajhang, a training participant said that her uncle was a conflict victim but she wasn't dependent on him neither were their families living together since a long period of time. Similarly, in Doti, one respondent said that she was receiving training because her father-in-law was beaten during the conflict time. However, during that time she wasn't married and didn't know about the incident. Nevertheless, she was a project beneficiary. Some project beneficiaries (non-skills development) who are eager to be involved in the skills development training-the most sought after area of support- shared some dissatisfaction. Some stated that though they were very keen to start entrepreneurship, they weren't chosen as they couldn't meet the set criteria, some were illiterate and some thought it was a long period to stay away from home.

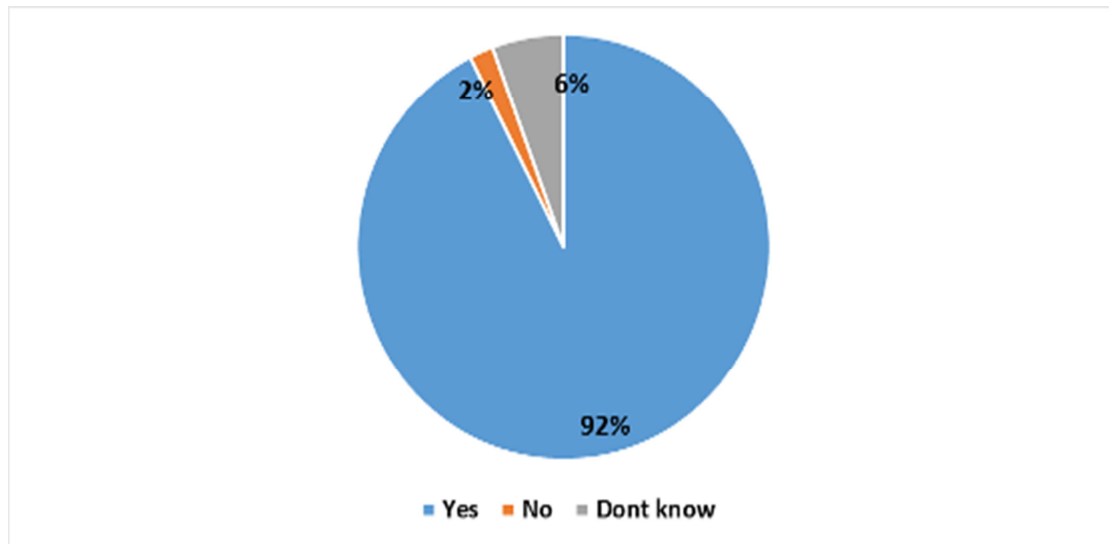
*“There are many other conflict affected women who lost their husbands, who were disabled, who have injuries in their bodies and have difficult economic conditions. But those with access to information were selected even though they were not directly affected by the conflict.” -FGD respondent, Bajhang*

*“There is a practice of seeking verification/ identification through Local Peace Committees (LPC) or VDC chair. In the coming days if the project is to scale up in terms of selecting more participants or new VDCs, then coordination with VLPC and concerned VDC needs to be strengthened in order to select genuine conflict affected people.” – VLPC, Masuriya VDC, Kailali*

- Project has created a platform for fostering women's rights towards gender equality by enhancing local women leadership through different awareness training events, increasing interface of CAW/G, former women combatant and IPWA members.
- Start-up workshops during the inception phase was organized, situation analysis was conducted, and consultations with stakeholders in the project districts were carried out to identify beneficiaries' and their needs and project activities have been satisfactory in

addressing the problem identified, 92% of the total respondents shared that the project has been as per their socio-economic needs as demonstrated in the figure here below.

**Figure 2.3:** Percent of respondents who shared that the project responds to their needs (n=161)



Source: MTE SIWPSAN Beneficiary Survey, March 2015

- Project is relevant in the current context of NAP localization, particularly when the NAP adopted by GoN is drawing to end by 2016. Project has strengthened capacity of DCC members in implementation and monitoring of NAP. It has increased awareness of NAP agenda at beneficiaries and local partners level, through trainings, dissemination of IEC materials and FM aired materials. NAP agenda can be carried forward by the DCC members, local partners and project beneficiaries till new plans, projects for NAP is formulated by the GoN.
- Project has worked with GoN in establishing the commitment to international norms and standards and in institutionalizing WPS agenda, for example through Gender Responsive Budget Planning. The project objectives are aligned with international norms and standards (CEDAW, BPfA, UNSCRs 1325&1820, MDGs, UNDAF outcome 8 and 9) on post-conflict agenda of gender equality through creating enabling environment to women's meaningful participation and leadership in decision making structures. In this regard, IPWA revival was noted to be very relevant in taking forward WPS agenda.

*“Our VDC was one of the most conflict-affected areas in Bajhang, where people have still not fully recuperated. In absence of a platform to share and talk about peace, there was bitterness among people who were deeply affected. The project has contributed to create awareness about peace and helped in reconciliation. After one year of this project implementation, we have seen families*

*from both sides of the armed conflict working together in the community. This is a positive aspect for us in the community and hence, we think the project is highly relevant.” -VDC Secretary, Bajhang*

- Project has stated the goals, outcomes and outputs which is well articulated in Result Resource Framework (RRF) (Details provided in Annex II). RRF is based on the situation analysis conducted during project inception phase, however, few indicators are ambitious that require revisiting as it may be difficult to attain those during a pilot initiative. For example, output 2.2 and 2.6.

#### **2.4.2 Effectiveness**

##### **Evaluation Questions:**

1. What has been the progress made towards achievement of the expected outputs?
2. What are the reasons for the progress or no progress towards achievement or non-achievement of expected outputs?
3. To what extent have beneficiaries been satisfied with the progress achieved against intended outputs?
4. Does the project have effective monitoring mechanisms in place to measure progress towards results?
5. To what extent do the intended outputs meet the needs of conflict affected women?
6. What efforts have been made by the partners to ensure participation of different stakeholders in the implementation process and what was extent of their participation?
7. What are the changes produced by the project on legal and policy frameworks at the national and regional level?
8. To what extent have capacities of duty-bearers and rights-holders been strengthened?
9. To what extent have capacities of the stakeholders been enhanced specifically for NAP implementation and monitoring?
10. To what extent are the benefits from project equally distributed between different groups of women, and have the potentials of disadvantaged women (poor, racial, ethnic, sexual, and disabled groups) been fully utilized to realize the outcomes?
11. Have the risks been appropriately identified and managed?
12. How does the project utilize existing local capacities of right-bearers and duty-holders to achieve its outcomes?

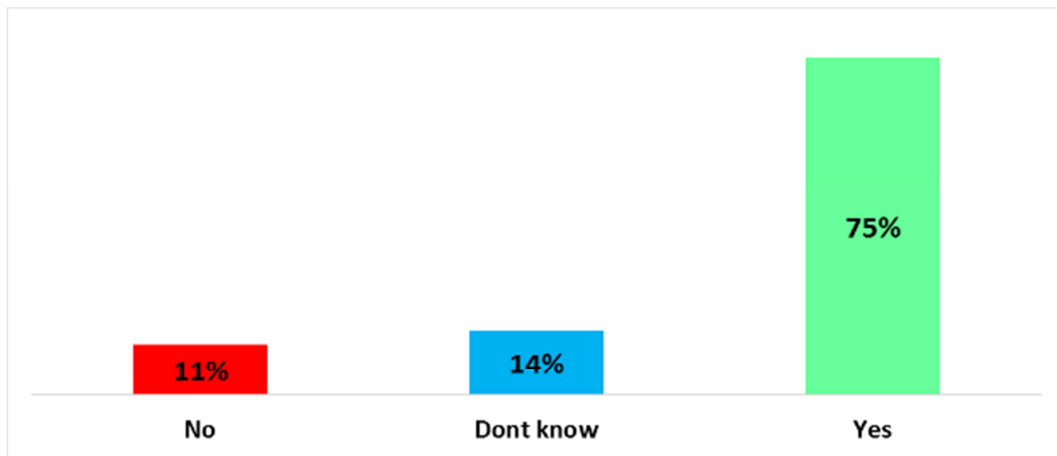
#### **Findings**

- Project progress against the stated objective is on track. The NAP monitoring report of each project districts are finalized by the concerned DDCs. All the plans and activities till December 2014 are completed on time but some delays in reporting from partners were noted.
- Partners prepared Detailed Implementation Plan to deliver the project activities; performance monitoring framework has been prepared with assigned responsibilities to monitor progress to ensure project effectiveness.
- Some project implementation issues include delays in activity delivery due to late fund transfer from the MoWCSW to DWC and WCOs. The quality of reporting and monitoring aspect from local partner in three districts were also noted to require further technical capacity, responding to which, capacity building trainings were delivered. Likewise, high turnover of project staffs in partner agency, for example four project coordinators were changed in a year in Kailali district has caused delays in project delivery.
- Other issues include lack of institutional memories at the Ministry, DCC, including WCO, DPO due to frequent transfers of government officials. Likewise, lack of timely project orientation (conceptual clarity, objectives of the project) to the new staff from the local partners has also caused effective implementation of project activities.
- The project seem to have effective monitoring mechanism in place to measure progress towards results. For example, project has prepared monitoring tools such as Monitoring Plan and Performance Measuring Framework. UN WOMEN regional office and project field officers monitor project progress at DCC level and local partners performance.
- Training<sup>17</sup> has enhanced capacity of local partners and the beneficiaries. Training contents and facilitations is appreciated by most of the participants.

---

<sup>17</sup> Project has delivered several capacity development training in partnership with Search for Common Ground (SFCG) for monitoring and evaluation, Training Centre of Nepal (TCN), for three month Skill development training such as mobile repairing, beauty parlour, sewing and tailoring and vegetable gardening and SAATHI for capacity building of local partners. IPWAs and DDC on NAP localization. In addition Local Development Training Academy (LDTA) delivers series of capacity development training on Gender Responsive Budgeting to mainstream WPS agenda in Government of Nepal annual plans.

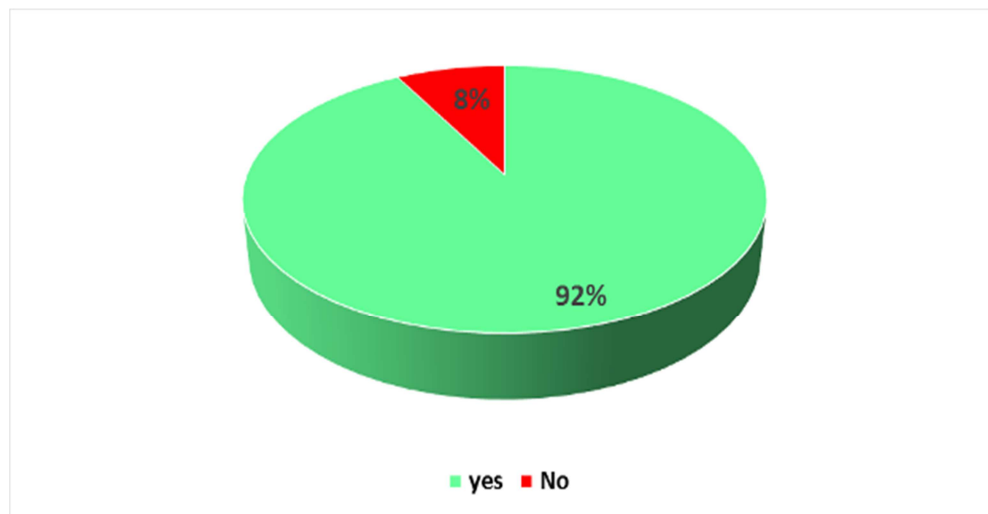
**Figure 2.4:** Percentage of respondent sharing improvement of socio-economic condition as a result of the project (n=161)



Source: MTE SIWPSAN Beneficiary Survey, March 2015

- Many participants of first slot of three month skill development<sup>18</sup> have started small scale business, like embroidery shops, sewing shops with the support from the project. As stated in the figure here below 92% of the survey respondents state that the skill training has helped to improve their livelihood. Most of the beneficiaries who started businesses have expressed that this has raised their confidence and status in their neighborhood.

**Figure 2.5:** Respondents stating that their livelihoods improved due to the training (n =32)



Source: MTE SIWPSAN Beneficiary Survey, March 2015

<sup>18</sup> A total of 150 beneficiaries have taken training on beautician course, off season vegetable farming, embroidery, mobile repair, poultry, mixed cooking and tailoring until December 2014. (Progress Update January- December 2014, UN WOMEN)



### ***“Learning embroidery improved my livelihoods”***

Malati Chaudhari, aged 21 from Dhangadi, Kailali has taken three months embroidery training provided by Training Centre Nepal (TCN). She was selected in the project as her father was disabled during the decade long conflict. She came to know about the project through a women alliance in Dhangadhi.



During her training she learned to embroider saree, blouse, shawl, pillow cover, veil (*Ghumti*), kurtha, table mat and bed cover. After the completion of her training, she rented a shop in Dhangadi and started her business. After renting a shop she received in-kind support equivalent to NRS 22,000 which included sarees, shawl, veil, needles thread, etc.

After initiating the business, she has been able to support her family financially. She has also provided employment to three other women in her community. In addition, she has expanded her business by selling readymade garments as well.

She is very satisfied with the training she received and expresses that her life has changed after starting the business. However, at the same time she stated that receiving some advanced training would further enhance her skills.

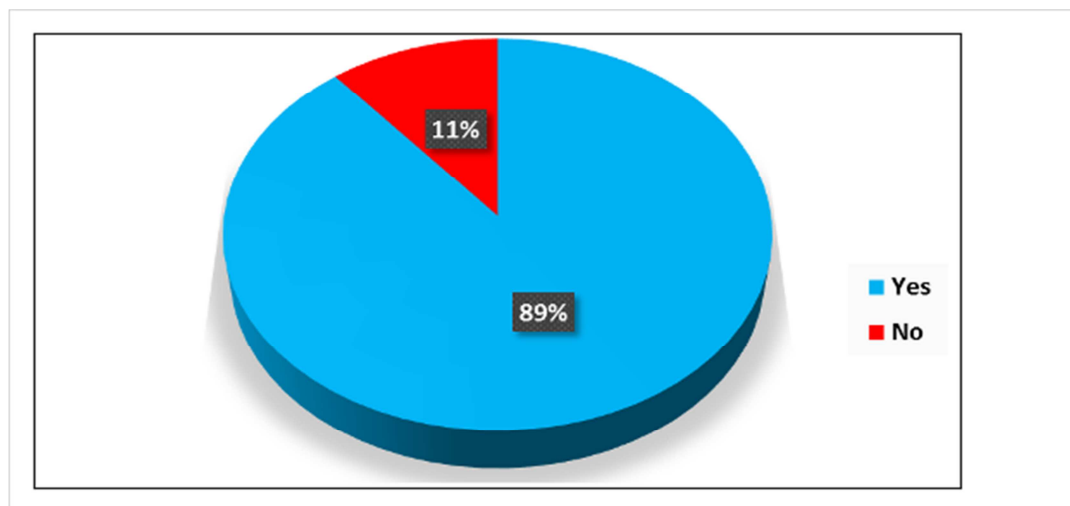
Lastly, “the training I received and the business I started as result of it has contributed to enhance my family’s livelihoods and our status in the community. I feel that after starting my business, the community’s perception towards my family has also become positive.”

- Participants who received other three slots of trainings<sup>19</sup> on NAP on UNSCRs 1325 &1820 and leadership in each district have also expressed that the training made them aware about women’s rights and helped increase their knowledge and understanding of WPS issues such as sexual violence, justice mechanisms and procedures. Most of the beneficiaries said that the project activities helped enhance their confidence and self-esteem. The figure here below states that 89% of the survey respondents shared that there is an increase in understanding of women, peace and security agenda in the project district.

<sup>19</sup> A two day VDC level training to 775 participants (conflict affected women’s groups and networks) on NAP action point (developing community peace and security plan to strengthen women’s sense of security and peacebuilding needs in line with UNSCRs 1325 and 1820 and GEWE )was organized in all 15 VDCs of the three project districts. A three-day training on women’s leadership was organized in the district headquarters of each project district (Kailali, Doti and Bajhang) with a total of 84 participants that included IPWN members, DCC members, WCSC representative and other women activists. (UN WOMEN progress report -2014 December page 12)



**Figure 2.6:** Percent of respondent sharing understanding on Women Peace and Security Agenda (n=161)



Source: MTE SIWPSAN Beneficiary Survey, March 2015

- Inclusion of social issues such as Violence Against Women (VAW), legal provisions, NAP on UNCSRs 1325 & 1820, and women's rights in the training content of the skills development training were found to be useful.
- Some of the participants also expressed that the duration of training isn't adequate to comprehend the complex issues and apply these in their daily lives. Similarly, provisions for refresher/ follow-up training would help them update themselves. Some also suggested that distribution of IEC materials can also help in dissemination of the information as well as refresh their learning.
- UN staff functional relationship (work division, roles and responsibilities) with WCO was observed to be not very clear and hence, there seems to be a lack of clarity in engagement of UN Women project staff based at WCO. One general view among WCOs was that UN WOMEN placement was specific for the SIWPSAN project instead of institutional capacity enhancing and likewise, lack of project ownership was also noted among WCOs.
- Joint Monitoring practice at ministerial and DCC level has established a good practice to increase ownership of concerned stakeholders. However, some implementation issues include irregular joint monitoring visits due to delay in budget release by DWC/MoWCSW delay in timely activities implementation as the local authorities are already overburden.

*"CDO is currently chairing around 136 various committees and has to attend approximately 80 different meetings per month. Therefore, given his responsibilities, it may be difficult to carry forward all project activities."*- KII respondent in Kailali.

*"I have been able to learn issue of the CAWG and former women combatants after I visited the training delivered by the project"*- WCO, Kailali

*"I have heard about the project but I am not fully aware about it. I have heard that it is going on well"*- Joint Secretary, MoPR

- Project has established 22 VDC level IPWA structures and 15 community structures of CAW&G, former women combatants and VAW survivors in the project districts through local partners<sup>20</sup>. IPWA revival and establishment was found to be one of the most successful project component, particularly in contributing to enhanced women’s participation and leadership in decision making position, improving women’s confidence and self-esteem, advocating for women’s rights, knowledge dissemination in the community about WPS agendas. It was also found that IPWA have been successful in securing funds from the DDC/ VDC in order to provide capacity building trainings for women, to construct a building for women’s groups and so on; hence, contributing to NAP localization.

*“Before we didn’t understand the issues of women and security. But this project has made us aware about these pertinent issues. We didn’t know about NAP 1325 & 1820 and its provisions but now we have started talking about sexual violence in the community and encourage everyone to break the silence and report the cases so that the perpetrators are punished.” - FGD Respondent, Musuriya VDC, Kailali*

*I married against my family will at the age of 16. Neither my family nor my husband's family accepted this relationship. Following which, I started experiencing domestic violence from my husband. Then after, I became a member of one of the groups promoted by SIWPSAN. After attending meetings, I learnt about domestic violence in my house as well as in my community. Now I am Chairperson of this group wherein I advocate about women’s issues confidently” –FGD Respondent, Rithapatha VDC Bajhang*

- The evaluation finds room for improvement in strengthening social mobilization aspect at the VDC level. Particularly, social mobilizer of local partners can play a greater role in strengthening the existing groups. It was also found that more orientations to SM of SIPWSAN project in terms of identifying WPS issues, linking women’s issues with district structure, mobilizing other VDC structures (CACs, mother’s groups) and bridging gaps/ fostering linkages between district level IPWA and VDC level IPWA can help improve effectiveness of the project. Lack of regular and timely visit by the SM was also raised for which local partners need to strengthen their monitoring on project activities and staff updates.

*“We are not completely happy the role of SM, wherein we think there may have been issues on the use of the monthly meeting allowances. Similarly, they don't also come to visit us regularly and organize meeting according to their convenience instead of regular schedule.” – Survey Respondent, Bajhang*

- The project has contributed to strengthened capacity of duty-bearers and rights-holders through capacity building, awareness raising and skills development training<sup>21</sup>. For example, 91% of the respondents were found to be aware on legal provision of the reporting procedures

<sup>20</sup> SIWPSAN Progress Update January-December 2014

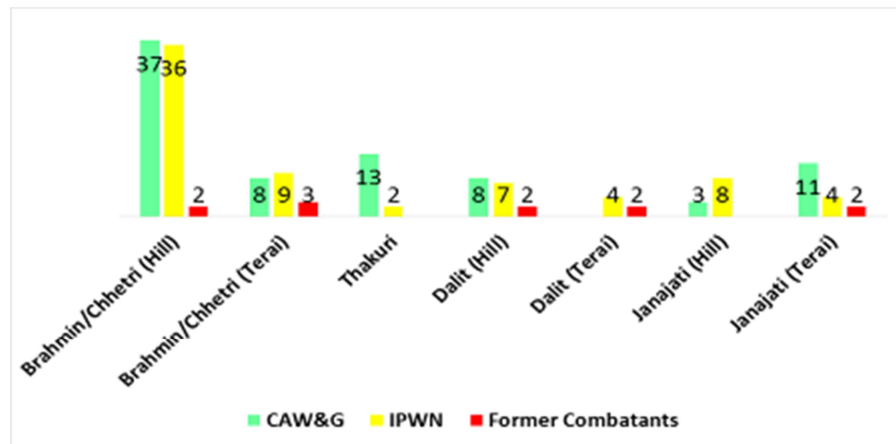
<sup>21</sup> Many respondents of KII and FGD expressed that due to various project activities such as trainings enhanced their skills and capacity. (e.g. NAP awareness training among DCC members supported in carrying out their roles (e.g. DPO), skills development training supported to conduct/start their business.

in case of VAW. However it is dependent on local authority's individual approach and pro-activeness. The project seeks to minimize the gap between duty bearers and rights holders and has succeeded to some extent.

Forty-two percent (42%)(18 out of total 42 DCC members in the three project district) DCC members including CDOs, LDOs and Women Development Officials (WDOs) of Kailali, Doti and Bajhang enhanced their knowledge on gender responsive budgeting, Convention on the Elimination of all forms of Discrimination Against Women (CEDAW), Beijing Platform for Action (BPfA), Universal Periodic Review (UPR), Millennium Development Goals (MDGs) and other national and international instruments, district level planning, pro-poor economic enhancement planning, zero tolerance of sexual violence, and women's leadership and empowerment and NAP implementation and localization as a result of the two workshops organized by MoWCSW. Source: UNWOMEN Progress Update, January 2014 - December 2014, page 7

- Even though the project has contributed to increase awareness on legal processes, provisions and conventions and has enhanced capacity of the GoN officials as well as motivated them to support women's rights issues at district level but it is too early to see the changes produced by the project on legal and policy frameworks.
- Project activities, stakeholders and partners have made efforts to ensure women's participation at VDC and district level wherein many beneficiaries stated that they were able to raise their voices, attend meetings and express their views. However, some beneficiaries also said that their voice is still less heard during the bottom-up approach planning process and allocating the budget for women groups.
- The project aims to reach out to the socially and economically marginalized population groups and is successful to a larger extent. However, in some cases it was also observed that some of the beneficiaries had land holding and they were from relatively affluent family. Out of total respondents, 50% of the respondents have agriculture as their main occupation, 19% business, 8% student, 9% job holders, 10% politicians and 4% in labor work.
- The project has taken measures to ensure that benefits from project are equally distributed between different groups of women (e.g. caste and ethnic groups). According to the survey, 59% of the total respondents are Brahmin/ Chettri, 9% of the respondents are Thakuri, 14% are Dalit and 18% are Janajati as explained in the following figure:

**Figure 2.7: Demographic composition of the beneficiaries (survey) (n=161)**



Source: MTE SIWPSAN Beneficiary Survey, March 2015

### 2.4.3 Efficiency

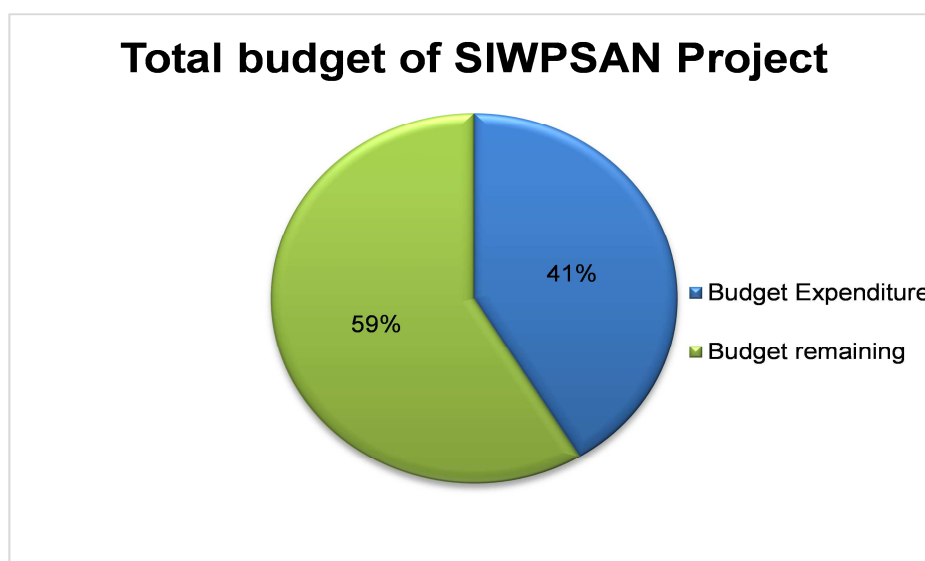
#### Evaluation Question:

1. What measures have been taken during planning and implementation to ensure that resources are efficiently used?
2. Have the project activities been delivered in a timely manner to achieve the outputs?
3. Is the project cost-effective i.e. could the project activities have been implemented at lower cost through adopting a different approach and/or using alternative delivery mechanisms?
4. Could the activities been delivered with fewer resources without reducing their quality and quantity?
5. Have UN Women's organizational structure, managerial support and coordination mechanisms effectively supported the delivery of the project?

#### Findings

- The total Budget of the SIWPSAN project is USD 1,726,428 wherein the total expenditure until Dec 2014 is USD712,928 (41%) as stated below in figure:

**Figure 2.8: Balance of budget as of December 2014**



Source: UN WOMEN

- Whilst ensuring quality assurance, the project has efficiently mobilized provided resources for project delivery. *(Please refer to Annex XI for details)*
- Sub-Regional structure of UN WOMEN in the current context has improved visibility at the regional level and to administer projects in the region. However, establishment of this structure specific and solely for SIWPSAN project may not add much value. For example, UN WOMEN Project field officer placed at WCO has contributed to effective implementation of the project and value addition of this position was distinctly noted. However, value addition of the establishment of an additional structure (sub-regional office) for this project alone couldn't be noted. Nevertheless, the structure can be justified if it were to administer and monitor other additional projects in the region.
- UN WOMEN project staff placement at WCO has added value to increase efficiency of the project delivery by enhancing coordination at the local level, supporting capacity of partners and strengthening monitoring and reporting (e.g. increased coordination with local partners, IPWA, contributed to DAP formulation and NAP monitoring plan). However, synergy between WCO and UN project field staff needs to be strengthened in all project districts. Lack of clarity of roles and responsibilities of UN Women Project staff to the WCO, and lack of ownership of this particular position among WCO are some of issues observed at the district level. For example, in some project districts, WDOs weren't clear on exact role of the UN WOMEN project staff and were of the opinion that the position was to support solely SIWPSAN project instead of support to the WCO.
- Project works with multiple partners (LDTA, SFCG, SAATHI, TCN) which may increase institutional costs but in terms of value-addition, involvement of the partners with various technical expertise has ensured quality delivery of the project activities.
- Social mobilizers are the frontline workers to work with groups promoted by the project but

they have received limited trainings which needs to be strengthened. In order to increase efficiency of the project delivery capacity of the social mobiliser needs to be strengthened.

- MTE team noted that alternative cost effective models would be working with existing structure in the community like mothers groups, WCO promoted saving and credit group to institutionalize WPS agenda. It was observed that most of the beneficiaries are usually members of other existing community structures; therefore, the value-addition of forming new groups of CAW&Gs couldn't be noted.

#### **2.4.4 Sustainability:**

##### **Evaluation Questions:**

1. To what extent have measures been adopted to ensure sustainability of the project activities and achievements?
2. To what extent the stakeholders have a sense of ownership of the project?
3. What is the likelihood that the benefits from the project will be maintained for a reasonably long period of time?
4. Is the project supported by national/local institutions? Do these institutions demonstrate leadership commitment and technical capacity for up-scaling or replication of successful experiences of the project?
5. What operational capacity of stakeholders such as technology, finance, and staffing, has been strengthened?
6. What adaptive or management capacities of national partners, such as learning, leadership, programme and process management, networking and linkages have been supported?
7. What are the perceived challenges to the sustainability of the results of the project?

##### **Findings**

- The project document states measure for sustainability as working with DCC and IPWA at the district level. It also proposes to support VDC level IPWA establishment. However, the document doesn't articulate on how the structures will sustain project gains after the project ends. Furthermore, project plans to link VDC structures to other existing initiatives after project phase-out is not been detailed out.
- Project intends to form social capital at the VDC level to sustain project gains through the existing structures but no efforts towards it could be noted. On the other hand, social mobilizer's capacity (not individual but institutional support) to mobilize the groups and strengthen the networks and expand linkage is limited. Project in the remaining period needs to capacitate the mobilizers to sustain project gains through social capital.
- Similarly, the project intends to capacitate VDC level women's alliance as per outcome three for which the project has to start linking with other existing community/ WCO structures and speed up formulation of exit strategy.

- The already burdened local stakeholders consider project facilitation as an added responsibility. Although the project intends to complement government policy and plans and has built capacity of different stakeholders to contribute to the implementation and monitoring of NAP on UNSCRs 1325 & 1820, the buy in of the local authorities is low.
- While the project has contributed in the localization of NAP through capacity building of DCC members, challenges remain, especially due to frequent transfers of the officials, lack of institutional memory transfer as the project mostly targets office chiefs, and question among the concerned stakeholders regarding the sustainability of the project.
- Another issue noted was that progress of project initiatives mostly depended on the individual proactiveness of local stakeholders rather than as institutional responsibility. For example, in Kailali, the LDO during the discussion shared how he had to convince the political leaders to incorporate women's rights issue during the finalization of annual District Development Plan (DDP).

"Initially, the budget was planned for women groups' capacity building in the annual DDP. Later when I received the plan, the budget heading was changed to constructing a water resource in the community. I identified and held bilateral talks with the individual- from one of the political parties- who influenced the change in the budget heading. I was able to convince him that this budget which is allocated for women's issues should be expended for the same purpose and shouldn't be used for any other purpose. This is how I was able to ensure that budget allocated for women's issues was spent for the same cause" – LDO, Kailali

*"District priorities and context differs from district to district to implement NAP effectively and monitor. The NAP implementation committees has to be proactive in increasing inter-ministerial coordination, particularly for allocating sectoral budgets on WPS agenda and allocating responsibility to the GoN line agencies to ensure effective monitoring of NAP and help institutionalize women's rights issue as well as mainstream gender issues in the district plans."*- CDO Bajhang

- Some stakeholders have the impression that project like SIWPSAN comes and goes, therefore, project needs to ensure in the remaining project tenure that there is an increase of ownership through exit strategy formulation.
- Project has invested in capacity building of the project partners to enhance the managerial, technical capacity of the DCC members and local partners to amplify, replicate project agenda and gains, and the partners expressed that they are not only eager to push forward the NAP agenda at the local level, but the project has also technically strengthened them for potential scale-ups in other VDCs as well.
- IPWA are exploring resources to sustain the project gains. The village level networks are very active and expressed voices that they will continue after the project through the other groups they have been working with like mother groups and user committees. However, MTE finds that to sustain project gains, initiations have to be taken forward from all

concerned stakeholders to build-in women's right issues in their plans.

- The project has contributed to enhance knowledge of DCC members on NAP. The increased knowledge will continue to institutionalize women's rights agenda towards gender equality.
- The project has contributed to integrate and harmonize NAP action points into DDC/VDC/ Municipal plan, for example through capacity enhancement of NAP stakeholders. It was found several civil society organisations have worked together with DCC by attending regular meeting. IPWA were also found to be active in ensuring that WPS agendas are reflected in the district development plans which can contribute to sustaining project gains.
- Most of the trained beneficiaries are committed to continue their business. But there is a need for regular follow-ups and ad-hoc support as required. For example, though the beneficiaries have received trainings on operating the equipment, some stated that they received low quality equipment and hence, aren't able to continue their business. Some also said that their crops were damaged and there is no follow-up support. Hence, they said that sustaining their businesses has become a challenge, more so when they aren't aware of available services in the districts to address their problems.
- Eagerness of the group towards sustainability for the project was noted, wherein IPWA were said to be exploring resources within the VDC and at the district level. IPWA expressed that they will continue to discuss WPS agenda in their regular meeting. However, basic support to at least conduct meeting must be provided and the opportunity cost for the women to leave their household chores and other income generating activities to attend the meeting must be addressed.

#### **2.4.5 Impact**

##### **Evaluation Question:**

1. What are the positive and negative changes produced directly or indirectly by the project on the opportunities of different groups of women, and on the socioeconomic conditions of their localities?

##### **Findings**

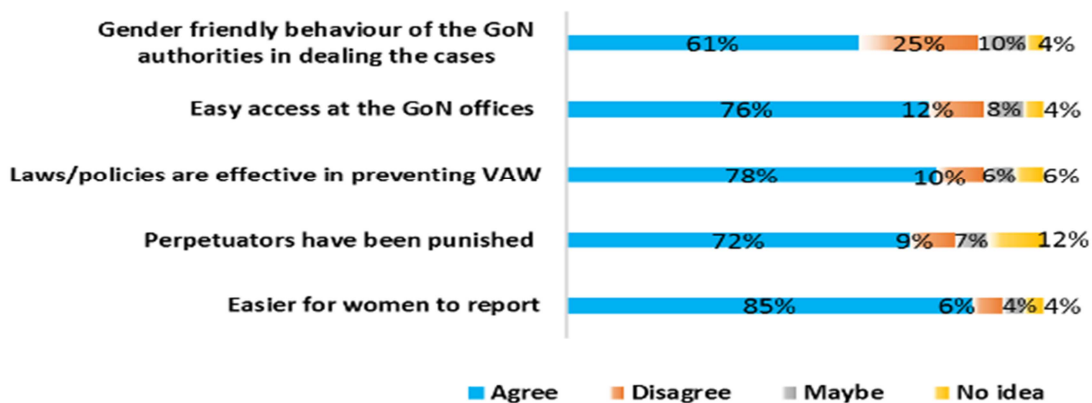
- Though the project is in its midway of the project cycle where a detailed assessment of impact may not be feasible at this stage, however, MTE finds some noticeable positive changes as impacts of the intervention. For example, reviving and mobilizing IPWA have yielded positive results (e.g. women started to raise their voice and started advocating for women's rights; increased confidence; increased awareness about issues related to VAW and women's rights) which may have long term implications for the promotion of women's leaderships in political processes at local as well as district level.
- IPWA in Kailali shared that SIWPSAN has created a platform for women from different political background and varying line of thoughts to come together for women's issues.



*“In the past (since 2066 B.S) we were only wearing political hats and were divided along the political lines. Coming together at a common platform to discuss issues that are related to women like us has united us. Being a member of IPWA has also improved interface within our own political party as well. We have started to lobby for women’s place in decision making process as well as advocating for women’s leadership on development issues where previously there was only male representation. We are lobbying for women’s place in periodic plans/ district plans to amplify women’s issues.” – FGD respondent, Kailali*

- Project activities such as peace memorials, community festivals, community dialogues, peace circles, meetings at community halls wherein conflict affected women, survivor of violence against women, school teachers, police personnel, political representatives, women leader and other local people participated, were found to be very effective in promoting social harmony and reconciliation. However, some partners, though expressing that these are positive aspects of the project, stated that peace memorial activity is challenging to implement and hence, some delays were also noted in activity implementation, for example in Kailali.
- MTE team discussed the status of VAW in the project district with Women and Children Service Centre (WCSC), local partners and Safe house chairperson. Some stated that the cases are coming out because of awareness, confidence of the women to raise voice to report cases while some were also the opinion that it was due to increase number of violence against women cases. However, evidences to assess this is only limited.
- Many stated during the FGD as well as in the survey that it has been easier to report cases and behaviors of the duty bearers have also started to change as stated in the below figure:

**Figure 2.9: Responses of beneficiary to VAW reporting status (n= 161)**



Source: MTE SIWPSAN Beneficiary Survey, March 2015

Some of the unintended positive consequences as a result of the project activity are establishment of additional VDC level IPWA in non-project VDCs. An unintended negative consequence was noted that while the project has trained beneficiaries for their skills development to support their

*“More beneficiaries are attracted towards this project due to its relatively high level of financial support as compared to the support provided by other women groups such as those promoted by the WCO. This also led to heightened expectation of the community which could not always be met by the program.”-Central level KII respondent*

livelihood and has provided seed money to start their business, the motivation to become group members is mainly due to financial support provided by the project. Therefore, after the completion of the training, some weren't keen to use their acquired skills and start or continue enterprises. On the other hand, the training was raising expectations of the community members who had difficulty in getting addressed by other IG related interventions of the WCO.

## CHAPTER 3: LESSONS LEARNT

**MTE noted the following to be broader level learning generated from the project implementation upto the mid-term period:**

- Strengthening of VDC level networks and structures can effectively contribute to institutionalizing and sustaining women's right agenda at local level. Establishment of IPWA in project VDC has set a good example as it contributed to highlight and widen women's rights issue at the local level. This was particularly evident from the fact that the project actually planned to establish IPWA in only 5 VDCs of each project district, but district level IPWA were so inspired that they started to initiate establishment of IPWA in other non-project VDCs as well.
- Project focus on empowerment of women through increased awareness on WPS agenda was able to exceed expectations on promoting WPS agenda. The project actually made additional focus on improving capacity of the partners, including DCC members and local partners in generating wider awareness and understanding of longer term benefits. This led to the partners being visibly keen in taking forward the WPS agenda even beyond the completion of the project period.
- One of the good practices of beneficiaries' selection was observed in Masuriya VDC in Kailali where CAW/G were identified through an extensive process of collaboration with key personals in the VDC (*sar jamin*). CAW/G are selected only after being verified by five local community people ( elders, local leaders from the neighbourhood) who is familiar with the individual. Following the application in VDC for CAWG selection, VDC coordinates with the VLPC for the participants selection. This is then followed by verification of the beneficiaries by five people in their neighborhood and thus, are selected from the respective wards. This led to ensure selection of genuine beneficiaries. Therefore, similar practices in selection of beneficiaries can be replicated in future programming.
- The project focused on enhancing capacity of NAP stakeholders to implement and monitor NAP on UNSCRs 1325 & 1820. Despite challenges due to frequent transfers of key GoN officials, lack of institutional memory on NAP and weak project ownership, engagement of multiple stakeholders such as local partners, UN Project Staff has contributed to better coordination among DCC members and in providing technical assistance as and when required to NAP stakeholders (e.g. WCO). This has better prepared the stakeholders in localization of NAP. Some examples of NAP stakeholders taking initiations to integrate NAP action points into DDC/VDC/ Municipal plan were noted in the project districts. Similarly, project emphasis on building capacity of local partners, CAW/G and IPWA has also contributed to expedite integration NAP action points into local plans.

## CHAPTER 4: CONCLUSIONS AND RECOMMENDATIONS

### 4.1 Conclusions

Project is a pilot multi-tier intervention that has taken a bottom up planning approach and implemented through multiple partners. The MTE notes that the project has developed effective monitoring tools, and a functional Result Resource Framework and Performance Measuring Framework for the monitoring of the project by implementing partners.

Project progress against the outputs is satisfactory till mid-way of the project. It has completed all the planned activities till December 2014. Project expenditure upto December 2014 is 41%, with the balance of 59% remaining for post-MTE activities.

The relevance of the project was found to be strong, which could be inferred from the survey with beneficiaries. This also came out strongly in the KIIs, consultations with a variety of stakeholders where most suggested scale-up of the project to other non-project VDCs in the project districts. The project works with CAW&G, Former Women Combatants and VAW survivors in three highly conflict affected districts of Far-West Region. Participatory bottom up approach was generally applied during the project planning and implementation phases to identify beneficiaries from among the target groups (e.g. IPWN, CAW&G, former combatants, VAW survivors). While this broadly helped in selection of targeted beneficiaries, MTE also noted that the project in few cases also included women beneficiaries other than those directly affected by the conflict.

Project puts higher degree of emphasis on capacity enhancement to address the needs of the beneficiaries, which it does through training on NAP on UNSCRs 1325 & 1820 and leadership enhancement delivered by local NGO partner and a three month skills development training provided by TCN. Among others, the skills development training was found to be most-sought after support, which has contributed to improve livelihoods of the participants. While most of the beneficiaries who took skills development training have started entrepreneurship, sustainability of these business can only be assured through support with follow-ups plans, market linkages and skills/knowledge on marketing products. Similarly, advanced training for those who started entrepreneurship should be considered.

Other trainings on NAP awareness and leadership were highly appreciated by the beneficiaries and were also said to have contributed to enhance their leadership skills and improved their knowledge and understanding on WPS agenda. This has also been substantiated by the survey findings.

Some project implementation gaps include irregular joint monitoring visits due to delay in budget release by DWC/MoWCSW, delay in timely activities implementation as the local authorities are already overburdened and lack of sufficient project ownership among project stakeholders (e.g. DCC members, PSC). Most of the work on NAP implementation and addressing women's right issues has been based on individual initiation of the CDO, LDO and WCO. Likewise, lack of institutional memory due to frequent transfers of district level GoN officials and lack of documentation handover process can weaken NAP localization.

Other challenges are limited capacity building trainings to SMs, who can play a vital role in amplifying and sustaining project gains and lack of role clarity among WCOs on UN Women Field Project Officer, limiting the project effectiveness.

Project has strengthened capacity of DCC members in implementation and monitoring of NAP. It has increased awareness of NAP agenda among beneficiaries, local partners and other stakeholders which has contributed to the localization of NAP. It was particularly evident through initiations taken by the stakeholders and beneficiary groups in the project districts to integrate and harmonize NAP action points into district development plans. There were also examples where IPWA have been successful in securing funds from the DDC/ VDC.

Overall, in the midway, the project is seen to be on track. Some measures such as strengthening coordination of local partners, increasing project ownership of GoN officials and strengthening local networks, including capacity building of Social Mobilizers (local partners) will need to be incorporated in the remaining project period to further improve the project. The suggestions for improvements are elaborated in the following section.

## 4.2 Recommendations

The following recommendations are suggested based on the findings of the MTE drawn from KIIs, FGDs, Survey, Consultations/ meetings with a variety of stakeholders and beneficiaries both at the field and central levels. A regional validation workshop was conducted in Dhandagi, Kailali, following which a Reference Group meeting was held at the UN Women Office in Kathmandu. The recommendations framed below are based on these consultative processes.

### **Recommendations to UN WOMEN:**

- Since SIWPSAN is a pilot initiative that adopted a comprehensive, bottom-up approach<sup>22</sup>, worked with multiple partners at multiple levels, the project should identify areas of strategic focus (e.g. capacity building of the key stakeholders, NAP localization at different levels etc) for its future programming guidance.
- Formulate an exit strategy that would include more sustained engagement of its partners in post-project scenario specifically, assigning clear roles and responsibility with action points and timeline to further promote the project gains. It is important that the strategy stipulates how resource and management can be in place to enable safe landing of the CAW/G, IPWA groups promoted by the project. Provisions shall be made for follow-up/advance trainings/market linkages, access to finance, linkages with existing relevant GoN structures and other district level business entities etc
- Ensure that SMs of local partners are equipped with adequate knowledge, information and capacity in order to link project promoted groups with existing structures in the VDC.
- Strengthen coordination, communication between local partners (TCN and DHS/CDS/BASE). Improve collaboration in implementing exit strategy. UN WOMEN project

---

<sup>22</sup> Bottom-up approach in SIWPSAN context refers to a process whereby information collection and decision-making are carried out in consultation with vulnerable and marginalized groups among the target beneficiaries.

field officer assist local partners to strengthen coordination at VDC level, to conduct more monitoring visits to the VDCs and meet the beneficiaries to get project updates and progress or to note any dissatisfaction.

- Revisit some ambitious indicators in the RRF (e.g. 2.2, 2.4, 2.5, 2.6 and 3.3) for smooth implementation and monitoring. (Please refer to Annex XII for more details).
- Even during the implementation phase, lessons learnt and best practices need to be documented so as to continually improve the learning process and inform future project design and benefit the wider audience.
- UN WOMEN learning of NAP localization through SIWPSAN could potentially be discussed at policy level and if applicable, advocate for scale up of the activities to additional districts.

**Recommendations to MoWCSW:**

- Formulate Project Management committee (PMC) to address gaps such as lack of intra-ministerial coordination, timely budget release, effective documentation and institutional memory, project ownership among local authorities and ensure smooth implementation of the project.

**Recommendations to MoPR/ PSC:**

- Take ahead discussion regarding coordination between different line agencies for NAP localization at ground and prioritize key areas for NAP implementation if it plans to expand the timeline of NAP.
- Continued support to DCC to be functional even after completion of project supports. This could be possible through design of appropriate capacity building measures and establishing mechanism to financially sustain DCC activities.

**Recommendations to Local Partners (TCN, BASE, DHS, CDS):**

- Increase joint meetings, regular updates with each other, regular follow-ups on project process, and improve communication/ learning and sharing amongst each other.

# ANNEXES

## ANNEX 1

### TERMS OF REFERENCE

#### **For a national agency to carry out the mid-term evaluation of Strengthening Implementation of the Women, Peace and Security Agenda in Nepal (SIWPSAN) project**

##### **1. Background and Justification**

Grounded in the vision of equality enshrined in the Charter of the United Nations, UN Women works for the elimination of discrimination against women and girls; the empowerment of women; and the achievement of equality between women and men as partners and beneficiaries of development, human rights, humanitarian action and peace and security. Placing women's rights at the centre of all its efforts, UN Women will lead and coordinate United Nations System efforts to ensure that commitments on gender equality and gender mainstreaming translate into action throughout the world. It will provide strong and coherent leadership in support of national priorities and efforts, building effective partnerships with government, civil society and other relevant actors.

In Nepal, UN Women's programmes are guided by Nepal's stated priorities, including those from the Approach Paper to the Three-Year Plan 2013-2016, and its commitments to relevant normative frameworks<sup>23</sup>, the country's UNDAF 2013-2017, the CEDAW Concluding Observations (2011) and UN Women's Corporate Strategic Plan 2014-2017. The programmes promote national ownership, capacity development and institutionalization, inclusiveness, coordination and partnerships, and knowledge generation and management, and seek to prioritize engagement with and support to key duty bearers who are responsible for advancing women's human rights and with rights holders so they can exercise voice and agency.

UN Women Nepal continues its work to strengthen women's leadership and participation in the peace and security agenda by supporting the implementation of national commitments, specifically the implementation and monitoring of the National Action Plan (NAP) on UN Security Council Resolutions (UNSCRs) 1325 and 1820 at the national and local levels, and by addressing the rights and agency of conflict-affected women so they can influence local decision-making processes to demand accountability and contribute to a sustainable peace. In order to reinforce the ongoing efforts, especially with respect to the implementation of the NAP on UNSCRs 1325 and 1820, UN

Women Nepal is implementing a project entitled "Strengthening Implementation of the Women, Peace and Security Agenda in Nepal (SIWPSAN): Towards Implementation of National Action Plan on UNSCRs 1325 and 1820" funded by the Government of Finland. The project covers three districts (Bajhang, Doti and Kailali) of Far Western region of Nepal and five Village Development Committees (VDCs) in each district.

---

<sup>23</sup> The Convention on the Elimination of All Forms of Discrimination Against Women (CEDAW), Beijing Platform for Action (BPfA), the MDGs, UN Security Council Resolutions 1325 and 1820.



The overall goal of the SIWPSAN project is ‘Women lead and participate in peace, security and governance processes at the local level in the Far West Region.’

The three expected outcomes of the project include:

- (i) Ministry of Women, Children and Social Welfare (MoWCSW), and District Coordination Committees (DCCs) have enhanced collective capability<sup>24</sup> at both the national and local levels to implement and monitor the NAP on UNSCRs 1325 and 1820;
- (ii) Conflict affected women and former women combatants in the three project districts are economically and socially empowered; and
- (iii) Enhanced leadership and participation of women in key decision-making structures in the three project districts.

The project’s outputs include the following: the MoWCSW gender unit staff and DCC members have increased capacity<sup>25</sup> to implement and monitor NAP; effective coordination and monitoring mechanism between MoPR and MoWCSW for NAP implementation in place at the local level; increased collaboration between DCCs and civil society groups to implement the NAP commitments; knowledge products featuring success stories of conflict victims/survivors and former women combatants produced; increased understanding of the situation of conflict-affected women and former women combatants; increased public awareness on NAP and women’s participation in peace, security and governance processes; conflict affected women’s groups and networks in select VDCs have increased knowledge and understanding on NAP action points and its practical use in their lives; conflict affected women and former women combatants have enhanced entrepreneurial capacity to pursue improved and sustainable livelihoods in the select VDCs; improved relationship between conflict affected women, former women combatants and communities; accessible, prompt and quality services available to the victims/survivors of sexual and gender-based violence (SGBV); VDC

level inter-party women networks established and functioning effectively; district and VDC level women leaders have increased knowledge and understanding of UNSCRs 1325 and 1820 to advocate the agenda of women, peace and security issues of the district; and women leaders in the districts take on leadership roles to promote peace and development.

The project is built on an understanding (theory of change) that investing in a comprehensive, integrated approach with a participatory bottom-up focus that develops not only the collective capabilities and capacities of the MoWCSW and DCCs at the national and

---

<sup>24</sup> Formulate adequate programmes to promote women’s leadership and participation in peace and governance processes (including identification and removal of discriminatory provisions in existing programmes); Advocate for the inclusion of gender equality and NAP commitments in national and local foundational planning documents; effectively advocate for, and demand accountability of, institutions to develop and implement commitments to women’s leadership and participation outlined in the NAP; Share information derived from the monitoring of implementation of NAP with relevant individuals or groups.

<sup>25</sup> To provide quality services required; effectively advocate for, and demand accountability of, institutions to develop and implement commitments to women’s leadership and participation outlined in the NAP; Share information derived from monitoring implementation of NAP with relevant individuals or groups

local levels to implement and monitor the NAP on UNSCRs 1325 and 1820, but also economically and socially empowers conflict affected women and girls and former combatants, and promotes their leadership and participation in key decision-making structures; such approach will contribute to creating an enabling environment for women's participation in peacebuilding and to addressing their protection, prevention, relief and recovery rights and needs; it will enhance women's capacities to exercise their active agency and ownership in peace, security and governance processes at the local level in the Far West Region.

The project is designed to support national priorities and commitments in relation to gender equality and women's empowerment. The project is specifically designed to assist the Government of Nepal (GoN) in its efforts to implement to NAP on UNSCRs 1325 and 1820 at the national and local level, adopted by the GoN in February 2011. The project is in line with the NAP's five pillars (participation, protection and prevention, promotion, relief and recovery, and resource management, monitoring and evaluation) of UNSCR 1325, supporting specific global indicators: 19, 20, 25 and 26. In line with NAP priority expectations, the project gives priority "to programmes that provide immediate relief assistance necessary for conflict-affected women and girls."

The key performance indicators of the project include the following: number of guidelines prepared by MoWCSW and DCCs that incorporate NAP on UNSCRs 1325 and 1820 action points and respond to CEDAW concluding observations on women in conflict; number of joint decisions taken forward by MoWCSW, Department of Women and Children (DWC) and Women and Children Offices (WCOs) to implement NAP actions points in districts; quality of reporting and response by MoWCSW on concluding observations (Universal Periodic Review components) on women/girls affected by conflict, violence against women, women's participation in political and public life; percentage of conflict affected and former women combatants who report that their economic and social conditions have improved as a result of the project; and percentage of women included in key decision-making structures (networks, forest user groups, school management committee, cooperatives, officers position in government offices, management board in civil society organization, political party, Local Peace Committees etc).The Results and Resources Framework (RRF) and Project Monitoring Framework (PMF) of the project are included in annex 1 and 2 respectively.

UN Women has established a Project Management Team for project coordination, reporting and monitoring. The Senior Management Team of UN Women provides guidance and support for smooth implementation of the project, integration with different thematic areas, resource mobilization, expansion and integration of this approach to other programmes. UN Women project staff based in the Country Office, Far West Regional Office in Dadeldhura and Field Project Officers based in project districts are responsible to provide technical support and guidance and to facilitate and monitor the quality of the work of responsible partners.

The project is being implemented by the MOWCSW, three local level NGOs namely Dalit Help Society (DHS) for Bajhang, Creative Development Society (CDS) Nepal for Doti and Backward Society Education (BASE) for Kailali, a technical institution (Training Centre Nepal), and one national level implementing organization. UN Women has been providing financial support for the project's activities and technical expertise to the MOWCSW and NGOs to

support implementation. At the national level, UN Women is working closely with MoWCSW and the DWC to facilitate and monitor implementation of the project activities. At the local level, the project is working with WCOs and local NGOs to implement the district and VDC level activities. A national level training institute is providing comprehensive skills based trainings with start-up support to conflict affected women. The agency is coordinating with the Inter-Party Women's Alliance, women's organizations, conflict victims groups and networks, civil society and private sectors to implement the project at the local level. A

Project Steering Committee<sup>26</sup> is established to oversee the implementation of the project, to provide strategic guidance, policy support, programme direction and to ensure the inter-ministerial coordination and cooperation to achieve the desired results of the project. The DCCs in three project districts works as the District Level Project Steering Committee (DPSC), for smooth implementation of the agreed project activities.

The project's inception phase commenced in June 2012, and concluded in May 2013. The duration of the project is 48 months, (12 months of inception phase from June 2012 - May 2013; and 36 months of implementation phase from June 2013-May 2016). The project's budget is €1.3 million. The project conducted a baseline survey the three project districts during the inception phase of the project in February 2013 to establish the baseline data for the project. Currently, the project is in its implementation phase which commenced in June 2013. The project has developed a result based performance monitoring framework to monitor project implementation.

The project document (ProDoc) of SIWPSAN (2013) envisaged a Mid-Term Evaluation (MTE) of the project to assess and evaluate achievements made by the project in meeting its objectives with special emphasis on the sustainability of environmental, social, political and economic benefits of conflict affected, ex-combatants and other vulnerable women. UN Women is responsible for undertaking the MTE. In this context, UN Women Nepal intends to commission an independent MTE of the project. The MTE has been planned to take place between 1 January 2015 and 31 March 2015.

For this purpose, UN Women Nepal is seeking the services of highly qualified, competent and prospective national agency to carry out the MTE. The evaluation team would work with the concerned programme staff, partners and other stakeholders to develop MTE report of the project.

## **2. Purpose and Use of the Evaluation**

---

<sup>26</sup> The Project Steering Committee is chaired by the Joint Secretary of the Ministry of Peace and Reconstruction. UN Women Representative acts as the co-chair, and representatives from relevant line Ministries such as Ministry of Women, Children and Social Welfare (MoWCSW), Ministry of Foreign Affairs (MoFA) and UN Agencies, such as FAO and ILO, are members of the PSC

The MTE anticipates establishing an overall picture of whether the project is on track towards achieving 12 outputs out of 15 outputs (all outputs except 1.6, 2.5 and 3.3) in the RRF<sup>27</sup> and creating a foundation for corrective action and the planning ahead for the rest of the period of project implementation. The MTE will focus mainly on the achieved results against the expected outputs of the project. The recommendations of the MTE will be of paramount importance for all project stakeholders and will guide to design and implement subsequent phases of the project.

The purpose of the MTE is therefore to:

- Determine if the project has achieved its stated outputs and examine whether the outputs are leading to the expected outcomes; and
- Provide recommendations on how to further improve the project implementation for the next

2 years to maximize the impact.

The specific objectives of this evaluation are to assess:

- Relevance:** extent to project design is appropriate to raise beneficiaries' requirements, national priorities and partners' and donors' policies and plan;
- Effectiveness:** extent to which project outputs were achieved, or outcomes are expected to be achieved, taking into account their relative importance;
- Efficiency:** measure of how economically resources/inputs (funds, expertise, time, etc.) are converted to results;
- Sustainability:** The probability of continued long-term benefits from the project; the resilience to risk of the net benefit flows over time; and
- Impact:** Observable changes of target groups and gender equality as a result of the project

### **Use of the evaluation report**

- The evaluation findings will be used by UN Women and project partners for making decisions and adjustments as required in design of the project for remaining one and half years of project period.

---

<sup>27</sup> The mid-term evaluation will be focused only on 12 outputs out of 15 outputs except the outputs 1.6, 2.5 and 3.3, since no any progress/result has been achieved against these outputs and the relevant activities of these outputs are planned to be implemented only from last quarter of 2014.

- The evaluation findings will also be used as guidance for tracking the project results to lead up to its final evaluation to be undertaken in May 2016 at the end of the project period.
- The evaluation findings will be used as reference during the final evaluation of the project.

### 3. Scope of Evaluation

- **Geographical coverage:** The evaluation will focus on the three project districts: Kailali, Doti and Bajhang including 15 VDCs<sup>28</sup> (5 VDCs in each district) at local level and Kathmandu at the national level. All three districts will be covered and the VDC will be selected based on the sampling methodology deployed. The inception phase will detail the appropriate sampling methodology.
- **Stakeholder coverage:** The evaluation will reach out to all stakeholders, i.e. project beneficiaries including conflict affected women, ex-combatants women, women survivors of sexual and gender based violence, MoWCSW and DWC, DCC members, other relevant government agencies and local bodies, I/NGOs, CSOs, political parties and their sister-wings, Inter-Party Women Alliances, relevant UN agencies and other appropriate stakeholders.
- **Substantive scope:** The evaluation will analyze the achieved results and progress, gaps and challenges with regards to the progress made towards achievement of 12 outputs out of 15 outputs (all outputs except 1.6, 2.5 and 3.3) of above stated three outcomes of the project as mentioned in the RRF. It will further scrutinize the changes on life of target groups and gender equality as a result of project, ownership of stakeholders, and likelihood of sustainability of the actions. Additionally, the evaluation will identify the positive and negative changes produced directly or indirectly by the project (impact) on the opportunities of different groups of women, and on the socioeconomic conditions of their localities, if any. The evaluation will also propose corrective measures for project implementation ahead.
- **Timeframe:** The evaluation will cover the period of 26 months including project's inception phase (June 2012-May 2013) and the implementation phase (June 2013-December 2014). The evaluation will be commissioned from 1 January 2015 to 31 March 2015.

### 4. Evaluation Questions

---

<sup>28</sup> The 15 project VDCs are: Thapapur, Balia, Masuriya, Narayanpur and Bauniya in Kailai district, Bajha, Rayal, Subeda, Majhigaun and Ritthapata in Bajhang district and Sanagaun, Kadamandu, Laxminagar, Barchhain and Ghangal in Doti district

The MTE will be based on the standard OECD DAC evaluation criteria and UNEG HR/GE guidance (<http://www.uneval.org/papersandpubs/documentdetail>). The evaluation should be guided but not limited to the scope of the evaluation questions listed below. The agency should raise and address any other relevant issues that may emerge during the evaluation.

The evaluation questions and their rationale will be refined by the evaluation team in consultation with UN Women. The proposed initial key questions to be answered by the evaluation are presented below in Table 1.

**Table 1: Evaluation Questions**

<p><b>Relevance:</b></p> <ul style="list-style-type: none"> <li><input type="checkbox"/> Are the project objectives addressing identified rights and needs of the target group(s) in national and regional contexts? How much does the project contribute to shaping women’s rights priorities in accordance to CEDAW, BPfA, UNSCRs 1325 &amp; 1820, MDGs, and with UN Women’s Global and National Strategic Plan?</li> <li><input type="checkbox"/> Has an appropriate beneficiary population been determined? What beneficiary needs are to be addressed? How were the priorities identified and who was consulted?</li> <li><input type="checkbox"/> Do the activities address the problems identified?</li> <li><input type="checkbox"/> Is the project design articulated in a coherent structure? Is the definition of goal, outcomes and outputs clearly articulated?</li> </ul>
<p><b>Effectiveness:</b></p>

- What has been the progress made towards achievement of the expected outputs?
- What are the reasons for the progress or no progress towards achievement or non- achievement of expected outputs?
- To what extent have beneficiaries been satisfied with the progress achieved against intended outputs?
- Does the project have effective monitoring mechanisms in place to measure progress towards results?
- To what extent do the intended outputs meet the needs of conflict affected women?
- What efforts have been made by the partners to ensure participation of different stakeholders in the implementation process and what was extent of their participation?
- What are the changes produced by the project on legal and policy frameworks at the national and regional level?
- To what extent have capacities of duty-bearers and rights-holders been strengthened?
- To what extent have capacities of the stakeholders been enhanced specifically for NAP implementation and monitoring?
- To what extent are the benefits from project equally distributed between different groups of women, and have the potentials of disadvantaged women (poor, racial, ethnic, sexual, and disabled groups) been fully utilized to realize the outcomes?
- Have the risks been appropriately identified and managed?
- How does the project utilize existing local capacities of right-bearers and duty-holders to achieve its outcomes?

**Efficiency:**

- What measures have been taken during planning and implementation to ensure that resources are efficiently used?
- Have the project activities been delivered in a timely manner to achieve the outputs?
- Is the project cost-effective i.e. could the project activities have been implemented at lower cost through adopting a different approach and/or using alternative delivery mechanisms?
- Could the activities been delivered with fewer resources without reducing their quality and quantity?
- Have UN Women's organizational structure, managerial support and coordination mechanisms effectively supported the delivery of the project?

**Sustainability:**

- To what extent have measures been adopted to ensure sustainability of the project activities and achievements?
- To what extent the stakeholders have a sense of ownership of the project?
- What is the likelihood that the benefits from the project will be maintained for a reasonably long period of time?
- Is the project supported by national/local institutions? Do these institutions demonstrate leadership commitment and technical capacity for up-scaling or replication of successful experiences of the project?
- What operational capacity of stakeholders such as technology, finance, and staffing, has been strengthened?
- What adaptive or management capacities of national partners, such as learning, leadership, programme and process management, networking and linkages have been supported?

- What are the perceived challenges to the sustainability of the results of the project?

**Impact:**

- What are the positive and negative changes produced directly or indirectly by the project on the opportunities of different groups of women, and on the socioeconomic conditions of their localities?



## 5. Existing Information Sources

Existing information sources of SIWPSAN project include: final project document of SIWPSAN, the reports submitted to Government of Finland by UN Women (First Progress Report, December 2012; Inception Phase Report, May 2013; and annual report, 2014), Baseline survey (situation analysis) report-2013, Calls/Requests for Proposals (for selection of project partners –programming and procurement), Terms of Reference (ToRs) of project partners, project staff members and consultants, Note to file documents for the selection of the proposals, mission and monitoring reports submitted to UN Women by project staff, and the quarterly progress reports (narrative and financial) submitted to UN Women by the partners (MoWCSW, three NGOs and Training Centre Nepal).

## 6 .Mid-term Evaluation Approach, Process and Methods

The evaluation will be carried out following the steps below:

- **Desk review of relevant documents and inception meeting of evaluation team with UN Women and Reference Group:** This will determine the methods and develop a feasible work plan. The work plan should describe in detail how the mid-term evaluation will be carried out, suggest further clarification on the applied methodology, roles and responsibilities of the participants, specify field visits, and outline the timeframe of each activity. Specifically, the methodology should: i) specify the approach to address the purposes of the evaluation and the evaluation questions-including a PMF with key evaluation criteria, questions, indicators, and sources of information); ii) determine the instruments and methods to gather relevant information and data; (e.g. document review, phone and face-to-face interviews, focus groups, surveys, site visits, etc.). It should also include the review of a wide range of information sources (e.g. documents, filed information, institutional information systems, financial records, and a variety of key informants-UN Women programme and operation staff partners, government officials, DCC members, civil society groups, conflict affected groups, and beneficiaries; iv) the approaches for the analysis and interpretation of data; v) the communication and reporting strategies of evaluation results; and vi) a work plan- indicating timeline for conducting activities and required resources. The evaluation criteria and questions also should be framed by integrating Human Rights and Gender Equality in evaluation, as guided by UNEG guidance

([http://www.uneval.org/papersandpubs/documentdetail.jsp?doc\\_id=1401](http://www.uneval.org/papersandpubs/documentdetail.jsp?doc_id=1401)).

- **Preparation of inception report:** the inception report contains MTE objectives and scope, description of evaluation methodology/methodological approach, data collection tools, data analysis methods, key informants/agencies, evaluation questions, performance criteria, issues to be studied, stakeholder analysis plan, role of the team, final work plan and reporting requirements. It should include a clear evaluation matrix relating all these aspects.
- **Data collection:** The suggested methods for the data collection include analysis of stakeholders, various sources of information, including in-depth desk review and documentation analysis, review of progress reports, project updates, situation analysis report, baseline data, performance monitoring framework, contractual agreements and ToRs of partners etc. relating to the project); in-depth interviews and focus group discussions with the concerned stakeholders at the national and local levels; meetings with the project partners; field visits to project sites; and other means to allow cross-validation of data. Based on consultations with UN Women, the evaluation team will visit selected project sites to validate the findings of the desk review and documentation analysis, and identify best practices and lessons learned. When the evaluation completed the data collection, they are expected to provide preliminary findings to UN Women Evaluation Manager (EM).
- **Data analysis and report writing:** clarify data analysis methods and summarize them in the report. The report should follow the UNEG report guidance and the structure should be:
  - o Executive Summary (2-3 pages)
  - o Introduction
  - o Findings
  - o Lessons learned
  - o Conclusions
  - o Recommendations
  - o Annexes (including interview list – without identifying names for confidentiality/ anonymity, data collection instruments, key documents consulted, Terms of Reference)

The number of pages should not exceed more than 50 pages including Annex.

- **Report consultation workshop:** draft report shall be presented in a stakeholder meeting to be convened at regional level (Far Western region).UN Women will provide support to the evaluation team to make sure wide ranging stakeholders, including partners and donors attended the meeting. The evaluation team will also hold separate meetings with and interview project partners, government agencies, NGOs, civil society organizations, political parties, UN agencies and relevant development partners.
- **Final evaluation report:** the evaluation team will finalize the evaluation report by incorporating the comments from the stakeholders. UN Women is responsible for dissemination of evaluation findings and recommendations among the stakeholders for further actions.
- **Dissemination of report:** UN Women will disseminate the report among the project partners and stakeholders at national and local level by sharing the published report. Additionally, UN Women will organize workshops among the key stakeholders at regional (Far Western region) and/or national level to share the findings of the evaluation.

□ **UN Women management response plan:** within 6 weeks of the report completion, UN Women will draft a management response. UN Women and project partners will utilize the evaluation findings and recommendations, through management response, for corrective action and the planning ahead for the rest of the period of project implementation. The recommendations will be of paramount importance for all project stakeholders and will guide to design and implement subsequent phases of the project. The timeframe for the above steps is suggested in Table-2 below:

**Table 2: Evaluation**

Activity	Product	Number of days	Feb	March	April and May
<b>Preparation &amp; Initial Desk Review</b>					
Initial desk review of relevant documents by evaluation team	<b>Inception report<sup>29</sup></b>	7			
Inception meeting with UN Women and Reference Group		2			
Draft an inception report		3			
Receive comments from UN Women and Reference Group		5			
Finalize the inception report by incorporating the comments		2			
<b>Data Collection and Analysis</b>					
Consolidate/collate the data/information collected from desk reviews	<b>Power Point (PPT) presentation on preliminary findings</b>	2			
Conduct field trips to collect data according to the evaluation framework in the inception report		20			
Data classification, systematization, and analysis		3			
Sharing of preliminary findings with UN Women		1			

<sup>29</sup> Refer the guidance note at: [http://unifem.org/evaluation\\_manual/wp-content/uploads/2011/05/Guidance-Note-9-Inception-Report.pdf](http://unifem.org/evaluation_manual/wp-content/uploads/2011/05/Guidance-Note-9-Inception-Report.pdf)

## Finalize evaluation report and Dissemination of Evaluation Results

Draft the first report	<b>First Draft report</b>	5			
UN Women comments on the report and the evaluation team finalise the draft by incorporating the comments		5			
Prepare the second draft report	<b>Second Draft Report</b>	5			
The evaluation team conducts a report consultation workshop with the reference group and stakeholders	<b>Workshop and PPT presentation</b>	1			
Incorporate comments and feedback from the report consultation meeting and finalize the full evaluation report	<b>Final evaluation report</b>	5			
Submission of final report to UN Women and sharing of report/findings by UN Women among stakeholders		1			
<b>Total</b>		<b>67</b>			

### 7. Stakeholder Participation

Involving stakeholders directly affected by an intervention (be they the implementers or intended beneficiaries) in the design, planning and implementation of its evaluation is a fundamental principle of any process sensitive to HR & GE issues.<sup>30</sup> UN Women will support the overall mid-term evaluation process and provide coordination support as required. The concerned programme staff at the national and district level of UN Women will provide relevant information and documents for to help mid-term evaluation. The project partners (MoWCSW, local NGOs, and Training Centre Nepal etc) and other key stakeholders i.e. DCC will be requested to support the evaluation team. The local staff and local partners will ensure that the project stakeholders and target groups are consulted during the evaluation.

<sup>30</sup> Integrating Human Rights and Gender Equality in Evaluation --Towards UNEG Guidance, UNEG/G(2011)2 Guidance

## **8. Expected Outcomes/Deliverables**

- Deliverable 1: An inception report by 20 March 2015
- Deliverable 2: PowerPoint presentation on preliminary findings by 10 April 2015
- Deliverable 3: 1<sup>st</sup> draft mid-term evaluation report by 16 April 2015
- Deliverable 4: Conduct a consultation workshop and present the draft report by 30 April 2015
- Deliverable 5: Final mid-term evaluation report (e-copy) by 10 May 2015
- Deliverable 6: Brief summary of the report (findings and recommendations) in Nepali language (maximum 10 pages): e-copy and 100 copies published.

All the above mentioned deliverables are to be written in English (e-copy) and submitted to the UN Women Nepal Country office in the due date.

## **9. Project Location:**

Kathmandu, Doti, Bajhang, Kailali and Dadeldhura (regional office)

## **10. Time Frame:**

The time frame for the assignment will be three and a half months (5 February 2015 to 30 April 2015 is the programming time and 1 to 15 May 2015 is the final reporting time). The final summary report, including the financial report will have to be submitted before 15 May 2015.

## **11. Evaluation Team Composition**

The evaluation team should consist of a team leader (national consultant) responsible for ensuring the quality of the overall MTR and four team members (3 national experts) with strong evaluation, data collection and analysis skills and one assistant. The proposal should outline the skills, experiences, qualifications and other relevant competencies such as language capabilities and detail tasks (ToRs) of the team.

## **12. Management of Mid-term Evaluation**

The Management Group comprising senior management team of UN Women (Representative, Deputy Representative and Peace and Security Unit Manager) will be in charge of the direct management of the evaluation. At the technical level, this group will provide technical feedback and support essential decision making during the whole evaluation process. It will prepare the TORs; participate in the selection of the evaluation; provide feedback to all technical products submitted by the evaluation team; prepare the management response and disseminate findings; and safeguard the independence of the evaluation. At the operational level, this group will be responsible for: recruitment of the evaluation agency/consultancy firm/institution; contractual arrangements and payments; making linkages between the evaluation team and senior management and other relevant stakeholders.

Similarly, the Reference Group consisting Embassy of Finland, and project implementation responsible partners (MoWCSW, DHS-Bajhang, CDS-Doti, BASE-Kailali, TCN etc) will provide feedback on key steps: comments to the inception report, and draft evaluation reports. The project partners will provide planning documents, progress reports, mission reports or other relevant documents to the evaluation team.

The mid-term evaluation team will work in close collaboration and consultation with project staff and management structure as per the below table-3

<b>Who: and Accountability</b>	<b>Actors</b>	<b>What: Roles and Responsibilities</b>
Reference group		<ul style="list-style-type: none"> <li><input type="checkbox"/> Safeguard the independence of the evaluation exercise and ensure quality of evaluations</li> <li><input type="checkbox"/> Participate in an inception meeting, comments on a draft inception report, and a draft evaluation report.</li> <li><input type="checkbox"/> Ensure the quality of the management response and follow-up actions</li> </ul>
Stakeholder group <sup>31</sup>		<ul style="list-style-type: none"> <li><input type="checkbox"/> Provide relevant information to the evaluation team</li> <li><input type="checkbox"/> Provide comments and feedback on the draft evaluation report in consultation meeting</li> </ul>
Country Representative, UN Women		<ul style="list-style-type: none"> <li><input type="checkbox"/> Safeguard the independence of the evaluation exercise and ensure quality of evaluations</li> <li><input type="checkbox"/> Responsibility of approving management responses to the evaluation in the GATE system and ensure the follow-up actions</li> </ul>
Regional Evaluation Specialist, UN Women Asia-Pacific Regional Office, Bangkok and UN Women Country Office M&E Officer		<ul style="list-style-type: none"> <li><input type="checkbox"/> Provide technical guidance to the evaluation management process to safeguard the independence and the quality of the evaluation</li> </ul>

<sup>31</sup> The key stakeholders group comprises: Inter-Party Women's Alliance, political parties, LPCs and women networks/organizations, DCC including government line agencies, NGOs and civil society organizations, networks of conflict affected women, and women activists, UN agencies, Government line ministries and other development partners

Evaluation Manager (UN Women Peace and Security Unit Manager)	<ul style="list-style-type: none"> <li><input type="checkbox"/> Coordinate overall process of the evaluation</li> <li><input type="checkbox"/> Provide overall guidance to the evaluation process to ensure the quality of the evaluation</li> <li><input type="checkbox"/> Coordinate administrative and logistics support to the evaluation team</li> </ul>
	<ul style="list-style-type: none"> <li><input type="checkbox"/> Ensure timely submission of the evaluation reports by the consultancy firm/institution to UN Women</li> <li><input type="checkbox"/> Facilitate a management response to evaluation and ensure the implementation of committed actions in the management response</li> <li><input type="checkbox"/> Disseminate the evaluation findings and ensure the follow-up actions</li> </ul>
Programme staff of SIWPSAN Project, UN Women (based in Country Office, Field Office and project districts)	<ul style="list-style-type: none"> <li><input type="checkbox"/> Provide all the relevant document and information sources to the evaluation team as required</li> <li><input type="checkbox"/> Provide logistics and administrative support to the evaluation team</li> <li><input type="checkbox"/> Coordinate overall process both at national and district level during the evaluation</li> <li><input type="checkbox"/> Make sure that the data collection in the field is conducted according to the plan, and the data quality</li> <li><input type="checkbox"/> Provide inputs to the products and support the finalisation of the evaluation process</li> </ul>
Evaluation team leader	<ul style="list-style-type: none"> <li><input type="checkbox"/> Lead the whole evaluation process and produce quality products in timely manner</li> <li><input type="checkbox"/> Supervise the team members</li> <li><input type="checkbox"/> Manage required logistics: office space, administrative and secretarial support, telecommunications, printing of documentation, methodological tools etc during overall evaluation</li> <li><input type="checkbox"/> Effectively communicate with UN Women Nepal Office ,</li> </ul>

Evaluation team members	<ul style="list-style-type: none"> <li><input type="checkbox"/> Support the whole evaluation process and produce quality products in timely manner</li> <li><input type="checkbox"/> Coordinate among evaluation team members and with the evaluation team leader</li> <li><input type="checkbox"/> Manage required logistics: office space, administrative and secretarial support, telecommunications, printing of documentation, methodological tools etc during overall evaluation</li> <li><input type="checkbox"/> Effectively communicate with UN Women Nepal Office, reference group and stakeholders</li> </ul>
-------------------------	--

**13. Contributing to the DRF/OEEF Outputs and UNDAF Outcomes**

DRF Output 4.1.1: Government officials (Ministry of Peace and Reconstruction (MoPR), Ministry of Women, Children and Social Welfare (MoWCSW) and DCC) have capacity to implement and monitor NAP on UNSCRs 1325 and 1820 commitments at the national and local level in collaboration with CSOs

DRF Output 4.1.2: Conflict affected women in select districts have increased capacity and opportunity to influence local decision making processes to sustain peace and demand accountability

OEEF Output 2.3: A clear evidence base generated from high quality evaluations of Annual Work Plan

(AWP) implementation for learning, decision-making and accountability. UNDAF Outcome

Outcome 9: National actors and institutions have managed conflict risk and are progressively consolidating the peace

**14. Reporting Obligation**

- Deliverables have been highlighted under section 8
- All purchase of equipment should be supported by at least three quotations.
- The agency shall provide UN women with a list of all non-expendable equipment purchased for the project, if any. Title of any equipment and supplies procured through UN women funds shall rest with UN women until such time as ownership thereof is transferred.
- A certified copy of all the equipment/furniture purchased under the project must be submitted at the end of the project.



- An audited financial statement for the actual expenditure in the form of income and expenditure/receipt & payment/balance sheet certified by the external auditor with relevant vouchers and updated statement in the UN women format.
- All knowledge product/press releases produced under this grant must acknowledge the support of UN Women

### **15. Required technical expertise and experience**

The evaluation team should consist of one team leader (national expert), three national experts and one assistant. The team leader should have the following competencies:

- Expert knowledge of and experience in applying qualitative and quantitative evaluation methods;
- A strong record in designing and leading evaluations;
- Data analysis skills
- Technical competence in sector of Women, peace and security, gender equality and women's empowerment
- Process management skills such as facilitation skills;
- Experience in gender analysis and human rights. Detailed knowledge of the role of the UN and its programming is desirable.
- Proven ability to produce reports of high quality

The team members (three national experts and one assistant) should possess the following competencies:

- Minimum education of Bachelors' degree from the recognized university.
- Technically sound in collecting quantitative and qualitative data
- Academic background in research/social sciences
- Familiarity with the terms related to gender equality, peace and security
- Experience in supporting evaluation team on administration/programme
- Knowledge of local language is highly desirable

### **16. Response to the Technical and financial proposals**

Please send a technical, outlining how your organization meets the criteria in section 15, and include a proposal as to how your organization would approach the work, including an activity plan and submit two or three examples of evaluation reports (at least one sample is mandatory)

Recently completed when responding to the Terms of Reference. Please also include a financial Proposal. The agency will be selected based on their technical expertise and experience, the quality of their proposal, and the cost-effectiveness of their financial proposal.

## ANNEX II

### RESULT RESOURCE FRAMEWORK

Results	Indicators	Means of Verification/Sources of Information	Progress	MTE Observations
<b>Goal:</b> Women lead and participate in peace, security and governance processes at the local level in the Far West Region				
<b>Outcome 1</b> Ministry of Women, Children and Social Welfare (MoWCSW), and District Coordination Committees (DCCs) have enhanced collective capability <sup>32</sup> at both the national and local levels to implement and monitor the National Action Plan (NAP) on UNSCRs 1325	<b>Indicator:</b> Number of guidelines prepared by MoWCSW and DCCs that incorporate NAP on UNSCRs 1325 and 1820 action points and respond to CEDAW concluding observations on women in conflict. <b>Baseline:</b> 0 (as of 2013) <b>Target:</b> 4 new guidelines (institutional guidelines, project design guidelines, monitoring guidelines, investigation guidelines) by 2016  <b>Indicator:</b> Number of joint decisions taken forward by MoWCSW, DWC and WCOs to implement NAP actions points in districts <b>Baseline:</b> 0 (as of 2013) <b>Target :</b> At least 5 joint decisions by 2016	<ul style="list-style-type: none"> <li>- Annual report of MoWCSW</li> <li>- NAP Monitoring Report</li> <li>- Quarterly report of NPTF</li> <li>- Treaty body concluding comments to GoN, and GoN reports including to treaty bodies.</li> </ul>	MoWCSW in the process of hiring Consultant to prepare the guidelines	DDC members in Kailali are taking initiations to include NAP action points in the District Development Plans

<sup>32</sup>Formulate adequate programmes to promote women's leadership and participation in peace and governance processes (including identification and removal of discriminatory provisions in existing programmes); Advocate for the inclusion of gender equality and NAP commitments in national and local foundational planning documents; effectively advocate for, and demand accountability of, institutions to develop and implement commitments to women's leadership and participation outlined in the NAP; Share information derived from the monitoring of implementation of NAP with relevant individual or groups.

Results	Indicators	Means of Verification/Sources of Information	Progress	MTE Observations
and 1820.	<p><b>Indicator:</b> Quality of reporting and response by MoWCSW on concluding observations (UPR by HRC, CEDAW CC, CRC Committee) on women/girls affected by conflict, violence against women, women's participation in political and public life</p> <p><b>Baseline:</b> Previous concluding observations to GoN on women affected by conflict, violence against women, women's participation in political and public life (2011)</p> <p><b>Target:</b> Previous treaty body observations addressed (timeliness, no. of observations satisfactorily addressed) by 2016</p>			
<p><b>Output 1.1</b> The MoWCSW gender unit staff has increased capacity to implement and monitor NAP</p>	<p><b>Indicator:</b> Number of MoWCSW gender unit staff who report an increase in knowledge and skills on applying NAP in their relevant area of work.</p> <p><b>Baseline:</b> 1 MoWCSW gender unit staff trained to monitor NAP implementation (as of May 2013)</p> <p><b>Target:</b> Entire MoWCSW gender unit team (5 staff members as of May 2013) trained and equipped to effectively implement and monitor</p>	<ul style="list-style-type: none"> <li>- Pre- and post-test assessment linked to the specific training</li> <li>- Project monitoring and evaluation framework of MoWCSW gender unit</li> </ul>	<ul style="list-style-type: none"> <li>- 5 MoWCSW gender unit staffs have enhanced knowledge and understanding on NAP implementation and localization through hands-on training and exposure visit.</li> <li>- Electronic equipment support (computers,</li> </ul>	<p>Strengthening Gender Unit staff will help to retain institutional memory.</p> <p>The equipment support has enhanced operational capacity of the Gender Unit.</p> <p>Project is progressive in preparing, monitoring</p>

Results	Indicators	Means of Verification/Sources of Information	Progress	MTE Observations
	<p>NAP by 2015</p> <p><b>Indicator:</b> MoWCSW gender unit has a monitoring and evaluation framework in place.</p> <p><b>Baseline:</b> No (as of 2013)</p> <p><b>Target:</b> Project monitoring and evaluation framework adopted by MoWCSW gender unit by 2015</p> <p><b>Indicator:</b> Number of appropriate and effective guidelines developed on the implementation of NAP on UNSCRs 1325 and 1820 at the local level</p> <p><b>Baseline:</b> 0 guidelines within MoWCSW</p> <p><b>Target:</b> 4 relevant guidelines developed to facilitate the implementation of NAP on UNSCRs 1325 and 1820 at the local level</p>		printers, camera, etc.) provided to the MoWCSW gender unit.	and evaluation framework and relevant guidelines to be completed by 2015.
<p><b>Output 1.2</b></p> <p>Effective coordination and monitoring mechanism between MoPR and MoWCSW for NAP on UNSCRs 1325 and 1820 in place at the local</p>	<p><b>Indicator:</b> NAP Implementation Committee meets regularly.</p> <p><b>Baseline:</b> Long gap in the organization of NAP Implementation Committee meetings (as of 2013)</p> <p><b>Target:</b> The NAP Implementation Committee meets every quarter from 2014</p> <p><b>Indicator:</b> Number of joint</p>	<ul style="list-style-type: none"> <li>- NAP Implementation Committee meeting reports and minutes</li> <li>- Joint monitoring visit reports</li> </ul>	<ul style="list-style-type: none"> <li>- A joint monitoring of MoWCSW and DWC organized in 3 projects districts (Bajhang, Kailali and Doti), local issues discussed and documented.</li> <li>- 1 event out of 2 has been completed in developing annual</li> </ul>	<p>Joint monitoring visit practices have proven to be a good practice in this project. This interface (duty bearer and right holder) has created a sharing environment for both to inform and educate each other's issues</p>

Results	Indicators	Means of Verification/Sources of Information	Progress	MTE Observations
level in select districts	<p>monitoring visits made by MoWCSW, DWC to monitor and coordinate DCC's functioning in the select districts.</p> <p><b>Baseline:</b> 1 (as of 2013)</p> <p><b>Target:</b> At least 6 joint monitoring visits to review NAP implementation in select districts by 2015</p>		NAP in Doti and Kalali	and concerns. WCO of Kailali stated that there were very productive joint monitoring visits DCC members to the project VDC which had educated them about their issues especially with those who were receiving trainings delivered by TCN
<p><b>Output 1.3</b></p> <p>DCC members have increased capacity<sup>33</sup> to implement and monitor NAP at the district level.</p>	<p><b>Indicator:</b> % of DCC members that report an increase in knowledge and skills on applying NAP in their districts</p> <p><b>Baseline:</b> DCC members currently in the districts do not have a good understanding of NAP and their role in implementing it at the district level<sup>34</sup></p> <p><b>Target:</b> 90% DCC members report an increase in knowledge and skills to implement and monitor NAP in their districts.</p>	<ul style="list-style-type: none"> <li>- Pre- and post-test assessment linked to the specific training</li> <li>- Planning and review meeting report</li> </ul>	<p>-Forty-two percent (42%) (18 out of total 4235 DCC members in the three project district) DCC members including CDOs, LDOs and Women Development Officials (WDOs) of Kailali, Doti and Bajhang enhanced their knowledge Gender responsive</p>	<p>-Exchange visits, total of eight monitoring visits conducted by DCC Kailali (three visits), Bajhang (three visits) and Doti (two visits) to monitor and supervise the project activities conducted at local level.</p> <p>-It was noted that the DCC meeting had not taken place since last three month in all</p>

33 provide quality services required; effectively advocate for, and demand accountability of, institutions to develop and implement commitments to women's leadership and participation outlined in the NAP; Share information derived from monitoring implementation of NAP with relevant individuals or groups

34SFCG, "Situation Analysis of Women and Girls in Conflict Affected Districts" (April 2013)

Results	Indicators	Means of Verification/Sources of Information	Progress	MTE Observations
	<p><b>Indicator:</b> Number of decisions taken at DCC meetings in select district on implementation of NAP on 1325 and 1820 action points</p> <p><b>Baseline :</b> 0 decisions (as of first quarter of 2013)</p> <p><b>Target:</b> 4 key decisions on implementation of NAP in DCC meetings by each DCC by 2015</p>		<p>budgeting, Convention on the Elimination of all forms of Discrimination Against Women (CEDAW), Beijing Platform for Action (BPfA), Universal Periodic Review (UPR), District level planning, pro-poor economic enhancement planning, zero tolerance of sexual violence, and women's leadership and empowerment; and NAP implementation and localization through training and exposure visits. (source: SWIPSAN project progress report).</p>	<p>project districts due to transfers of CDO, LDO.</p>
<b>Output 1.4</b> Effective	<b>Indicator:</b> Number of DCC meetings held	- Meeting Minutes	- The DCC Doti, Kailali and Bajhang	Project has strengthened

Results	Indicators	Means of Verification/Sources of Information	Progress	MTE Observations
<p>coordination and monitoring mechanism for NAP implementation at the district level in place.</p>	<p><b>Baseline:</b> 2 DCC meetings held in Kailali, 1 meeting in Doti and 1 meeting in Bajhang districts (as of second quarter of 2013)  <b>Target:</b> At least 6 meetings of DCC in each district per year</p> <p><b>Indicator:</b> Number of action plans prepared and endorsed by DCC  <b>Baseline:</b> 0 (as of second quarter of 2013)  <b>Target:</b> Three DCCs have their annual work plans developed and endorsed for implementation by 2015</p>	<ul style="list-style-type: none"> <li>- Joint monitoring report</li> <li>- Annual progress report</li> <li>- Work plan</li> </ul>	<p>prepared and endorsed the District Action Plan (DAP) on NAP implementation as a result of a series of consultations undertaken in each project district involving the stakeholders working in the area of women, peace and security.</p> <ul style="list-style-type: none"> <li>- DCC Doti, Kailali and Bajhang with the help of the local partners, prepared a District Monitoring Report on NAP on UNSCRs 1325 and 1820 implementation. The monitoring report of each DCC included the district context of NAP implementation, major achievements, gaps and challenges and way forward.</li> </ul>	<p>coordination across all concerned actors in preparing, implementing and monitoring NAP. DCC is the monitoring mechanism in each district. Project need to ensure that meetings are regular to meet the target set by the project (six meeting per year) joint monitoring visits are frequently carried out to ensure effective implementation of NAP</p>

Results	Indicators	Means of Verification/Sources of Information	Progress	MTE Observations
			- Five DCC meetings has been conducted till date	
<b>Output 1.5</b> Increased collaboration between DCCs and civil society groups to implement the NAP commitments in the select district.	<b>Indicator:</b> Number of interactions on women, peace and security agenda held between DCC and civil society groups <b>Baseline:</b> No formal meetings between DCC and civil society currently being organized to implement the NAP commitments in the districts are held yet (as of 2013) <b>Target:</b> Quarterly formal meetings organized in collaboration between DCCs and CSOs to implement the NAP commitments in each district (2015)	- Meeting Minutes - Joint monitoring report - Annual progress report	- 244 DCC members and civil society representatives including journalist, political activists, NGO federation representative, women activists, LPC representatives and other likeminded organizations have enhanced understanding on women, peace and security as a result of the ten (10) interactions held between DCC and Civil Society Organizations. noted that the interface of civil society and DCC and WCO is more effective in Kailali than other two districts. - District partners in Bajhang have	In Kailali, good example of civil society groups and DCC collaboration was noted compared to other two districts.



Results	Indicators	Means of Verification/Sources of Information	Progress	MTE Observations
			facilitated five interaction on women , peace and security agenda held between DCC and civil society including - District partner in Doti has facilitated 5 events out of 8 events on WPS agenda	
<b>Output 1.6</b> Knowledge products featuring success stories of conflict victims/survivors and former women combatants produced by UN Women	<b>Indicator:</b> Number of knowledge products made available by UN Women <b>Baseline:</b> 6 documentaries made available by UN Women (as of 2013) <b>Target:</b> 3 Documentaries (1 in each district) produced and widely disseminated (2015)	UN Women website	No progress till end 2014.	<b>Not assessed by the MTE as per TOR</b>
<b>Outcome 2</b> Conflict affected women and former women combatants in the three project districts are	<b>Indicator:</b> % of conflict affected and former women combatants who report that their economic and social conditions have improved as a result of the project <b>Baseline:</b> TBD <b>Target:</b> 50% of target women	- Annual progress report - Joint monitoring report - FGD report	According to the MTE survey, 75% of the total respondent stated that their social and economic condition improved as a result of this	MTE observed that those trainees who have started their businesses and are able to run their business independently and exploring other resources

Results	Indicators	Means of Verification/Sources of Information	Progress	MTE Observations
economically and socially empowered.	participants of Income Generating Activities(IGA) support beneficiaries report of increased economic and social status		project.	
<b>Output 2.1</b> Increased understanding of the situation of conflict-affected women and former women combatants in the three project districts	<b>Indicator:</b> Data on conflict affected women, former women combatants and women victims/survivors of SGBV available in the five target VDCs. <b>Baseline:</b> 2,791 conflict victims (415 in Bajhang, 610 in Doti and 1,766) identified by the MoPR (as of 2013) <b>Target:</b> Updated and accurate data on conflict affected women, former women combatants and women victims/survivors of SGBV from all 15 project VDCs available by 2015	- NAP Database  - Follow-up mini survey report	- Data of 734 conflict affected women and former women combatants of 15 project VDCs of the three project districts collected, analyzed and made available.	
<b>Output 2.2</b> Increased public awareness on NAP and women's participation in peace, security	<b>Indicator:</b> % of general public who say that they have heard of or know about NAP in select districts <b>Baseline:</b> 4% of respondents said that they have heard about NAP on UNSCRs 1325 and 1820 <sup>36</sup> ; 2% of respondents said that they have got	- Perception Survey  - Event reports	- Partnerships are continuing with seven local FM radio stations to disseminate information and social messages on the NAP, GEWE	Out of 161 respondent 89% said they have heard NAP and WPS agenda.

36SFCG, "Situation Analysis of Women and Girls in Conflict Affected Districts" (April 2013)

Results	Indicators	Means of Verification/Sources of Information	Progress	MTE Observations
and governance processes in select project districts	access to materials related to UNSCRs 1325, 1820 and NAP <sup>37</sup> <b>Target:</b> 25% of local residents of select 15 VDCs aware of NAP; 25% of respondents of five VDCs in each district say they know about UNSCRs 1325, 1820 and NAP by 2015; 40 % increase in the general public in select districts reporting that they have access to materials related to UNSCRs 1325, 1820 and NAP by 2015		and women's rights in the project districts. The FM radio stations have wide coverage to all VDCs and are regularly broadcasting jingles of 30-45 seconds long in Nepali and local languages <sup>38</sup> , and approximately 5,000 events social messages <sup>39</sup> have been aired. - A survey conducted by district partner in Bajhang with 121 people in five project VDCs found that 80% general public said that they have heard of or know about NAP in five project VDCs.	63% of the survey respondents said that they heard about the project through local FM.
<b>Output 2.3</b>	<b>Indicator:</b> Number conflict affected women's groups and networks	- Annual progress report	- 15 Conflict Affected Women	Understanding of NAP action point has

<sup>37</sup>SFCG, "Situation Analysis of Women and Girls in Conflict Affected Districts" (April 2013)

Results	Indicators	Means of Verification/Sources of Information	Progress	MTE Observations
<p>Conflict affected women's groups and networks in selected VDC of the project districts have increased knowledge and understanding on NAP action points and its practical use in their lives.</p>	<p>formed in the select VDC  <b>Baseline:</b> 1 network in one VDC of Kailali, no networks in other VDCs (as of 2013)  <b>Target:</b> At least 5 networks of women affected by conflict and former women combatant by (2015) in each district   <b>Indicator:</b> % of women in the conflict affected groups and networks who report an increased knowledge and understanding on district NAP Plan and their practical use in their lives.  <b>Baseline:</b> TBD  <b>Target:</b> At least 75% of women from the conflict affected groups and networks report an increase in understanding and knowledge</p>	<ul style="list-style-type: none"> <li>- Pre- and post-test assessment reports</li> <li>- Survey</li> <li>- FGD report</li> </ul>	<p>Groups(CAWGs) comprising of 305 conflict affected women and former women combatants, formed and strengthened in the 15 project VDCs in three project districts (Kailali, Doti and Bajhang). The meeting of CAWGs are regular. These groups have increased knowledge and understanding on Women's peace and security agenda and women's right issues, lobby to attain their entitlement.</p> <p>-16 conflict affected women's groups and networks are formed in the project VDCs with a total of 320 members in</p>	<p>increased across concerned stakeholders. Group members shared that they discuss NAP issues during monthly meetings and informally within neighborhood.</p>

Results	Indicators	Means of Verification/Sources of Information	Progress	MTE Observations
			<p>Bajhang</p> <p>-35% of women in CAWG, Bajhang state that they have increased knowledge of district NAP plan and their practical use in their lives</p>	
<p><b>Output 2.4</b> Conflict affected women and former women combatants have enhanced entrepreneurial capacity to pursue improved and sustainable livelihoods in the select VDCs</p>	<p><b>Indicator:</b> % of conflict affected women and former women combatants trained on entrepreneurship development <b>Baseline:</b> TBD <b>Target:</b> At least 30% of conflict affected women and former women combatants in the select VDCs will be trained on entrepreneurship development by 2015</p> <p><b>Indicator:</b> Percentage of conflict affected women and former women combatants running small micro enterprises <b>Baseline:</b> 7% of conflict affected and 1% ex-combatants running small enterprises through micro-credit facility (as of 2013) <b>Target:</b> 15 % of conflict affected</p>	<ul style="list-style-type: none"> <li>- Annual progress report</li> <li>- Follow-up mini survey</li> <li>- FGD report</li> <li>- NAP Database</li> </ul>	<p>- 150 women (117 conflict affected women, six former combatants and 27 victims of violence against women) graduated from three months of training on entrepreneurship development. 88 women are currently participating in the three month skill development programme in project VDCs (Doti, Kailali and Bajhang).</p> <p>- 150 have received start up support,</p>	<p>MTE study require baseline value to assess progress against the indicator which further facilitates the final evaluation. Here again some indicators are to be decided. It was noted that the entrepreneur skill of the Conflict affected women and former women combatants has enhanced. More details in the relevance section of this report</p>

Results	Indicators	Means of Verification/Sources of Information	Progress	MTE Observations
	women and 10 % former women combatants running small enterprises through micro-credit facility by 2015		training graduates have subsequently opened businesses, including beauty parlors, embroidery, small restaurants, poultry farms, tailoring shops and shops selling seasonal vegetables in all project districts.	
<b>Output 2.5</b> Improved relationship between conflict affected women, former women combatants and communities in project districts	<p><b>Indicator:</b> % of conflict affected women and former women combatants who report that they have been accepted by the communities in selected districts.</p> <p><b>Baseline:</b> 0<sup>40</sup></p> <p><b>Target:</b> 50% conflict affected women and former women combatants report that they have been accepted by the community.</p> <p><b>Indicator:</b> Number of case studies emphasizing that conflict affected women and former women</p>	<ul style="list-style-type: none"> <li>- Survey among conflict affected women and ex-combatant women.</li> <li>- FGD report</li> <li>- Case studies</li> </ul>		<b>Not assessed by the MTE as per TOR</b>

40 SFCG, "Situation Analysis of Women and Girls in Conflict Affected Districts" (April 2013). The analysis found that conflict affected women and former women combatants reported that they have not been accepted by the society yet.

Results	Indicators	Means of Verification/Sources of Information	Progress	MTE Observations
	<p>combatants are being increasingly accepted in the communities in select district</p> <p><b>Baseline:</b> 0 Family and community are reluctant to integrate conflict affected women and former women combatants into the society (2013)</p> <p><b>Target:</b> 5 case stories of social harmony and reconciliation as a result of the project, documented (2015)</p>			
<p><b>Output 2.6</b> Accessible, prompt and quality services available to the victims/survivors of SGBV in select districts</p>	<p><b>Indicator:</b> % of women reporting incidence of SGBV</p> <p><b>Baseline:</b> 19% women have experienced domestic violence and 10% have experienced sexual harassment; 5% of women reported that they feel completely secure outside of their houses (as of 2013).</p> <p><b>Target:</b> Only 5% women report case of domestic violence and 2 % women report cases of sexual harassment by 2015</p> <p><b>Indicator:</b> % of victims /survivors of SGBV that are able to access safe houses, and Women and Children Service Centers support</p> <p><b>Baseline:</b> TBD</p>	<ul style="list-style-type: none"> <li>- Survey among conflict affected women and former women combatants.</li> <li>- Follow-up report</li> <li>- Annual progress Report</li> </ul>	<ul style="list-style-type: none"> <li>- Safe houses and women police cell that received equipment support from the project demonstrates enhanced institutional capacity to enhance their service to survivors of violence against women and to maintain database</li> <li>- 26 police staffs working in WCSCs of the entire Far-Western Region have enhanced</li> </ul>	<p>SIWPSAN project Monitoring plan has indicated to understand SGBV as VAW. VAW cases in the VDC are coming out. Project has contributed to create a safe space for VAW survivors through their support to safe houses.</p> <p>The set indicators of this out put 2.6 seems very ambitious to attain. The baseline values are not decided This indicator</p>

Results	Indicators	Means of Verification/Sources of Information	Progress	MTE Observations
	<p><b>Target:</b> At least 20% victims/survivors of SGBV access quality support services from shelter houses, and Women and Children Service Centres</p> <p><b>Indicator:</b>% of staff from Women and Children Service Centre receiving training on SGBV and other issues related to women and girls</p> <p><b>Baseline:</b> TBD</p> <p><b>Target:</b>75% of staff from Women and Children Service Centresreceives training on SGBV by 2015</p>		<p>knowledge and skills on psycho-social care through training.</p> <p>- 75 stakeholders include police, prosecutors, health professional and law professionals and human rights organizations in three project districts have enhanced understanding on NAP.</p>	needs to be revisited.
<p><b>Outcome 3</b> Enhanced leadership and participation of women in key decision-making structures in the three project districts</p>	<p><b>Indicator:</b> % of women included in key decision-making structures (networks, forest user groups, school management committee, cooperatives, officers position in government offices, management board in civil society organization, political party, LPCs)</p> <p><b>Baseline:</b>55% women participated in network/groups while 19% of women represented in key decision-making structures at local level (as of 2013); of those participated in network/groups, 7% women said</p>	<ul style="list-style-type: none"> <li>- Annual progress report</li> <li>- NAP database</li> <li>- Survey</li> </ul>	<p>According to the survey, 79% of the total respondents said that women in their community have achieved leadership position. Likewise, 7% of the total beneficiaries said that women haven't achieved leadership position. Lastly, 14% stated that they don't</p>	<p>During the FGDs, respondents shared that some have been able to take vital role in the decision making level of the SIWPSAN promoted groups and the project contributed in enhancing their leadership.</p>



Results	Indicators	Means of Verification/Sources of Information	Progress	MTE Observations
	<p>they are able to influence decision making processes in key decision making structures (as of 2013)</p> <p><b>Target:</b> 70% women participated in network/groups and 25 % of women represented in key decision-making structures at local level by 2015; of those participated in network/groups, 20 % women said they are able to influence decision making processes by 2015</p>		know.	
<p><b>Output 3.1</b> VDC level inter-party women networks established and functioning effectively</p>	<p><b>Indicator:</b> Number of VDCs level functional inter-party women networks</p> <p><b>Baseline:</b> 0 VDC level inter-party women alliances formed (as of 2013)</p> <p><b>Target:</b> 15 VDCs level inter-party women networks established by mid-2014</p>	<ul style="list-style-type: none"> <li>- Annual progress Report</li> <li>- Feedback from community</li> <li>- FGDs report</li> </ul>	<ul style="list-style-type: none"> <li>- 22 (6 in Bajhang, 5 in Kailali and 11 in Doti) VDCs level Inter-party Women's Alliance (IPWA) established and functional.</li> </ul>	<p>VDC level Inter-Party Women Alliance (IPWA) established by the project are meeting regularly, discuss different women's right issues and advocate for the same. Establishing VDC level IPWA has been one of the positive aspects of this project. IPWA have been established in other non- project VDC after SIWPSAN intervention. Project needs to ensure</p>

Results	Indicators	Means of Verification/Sources of Information	Progress	MTE Observations
				the linkages of IPWA with other structure <sup>41</sup> to carry forward project gains after May 2016
<p><b>Output 3.2</b> District level and VDC level women leaders have increased knowledge and understanding of UNSCRs 1325 and 1820 to advocate the agenda of women, peace and security issues of the district</p>	<p><b>Indicators:</b> Number of trained women leaders who demonstrate increased knowledge and skills on UNSCRs 1325 and 1820 in selected project VDC. <b>Baseline:</b> 0 Number of women leaders have heard about NAP 2013<sup>42</sup> in selected project VDC. <b>Target:</b> 100 local women social and political leaders demonstrate enhanced knowledge and understanding on UNSCRs 1325 and 1820 NAP by 2015 in selected VDC</p> <p><b>Indicators:</b> Number of trained women leaders who demonstrate increase knowledge and skills on UNSCRs 1325 and 1820 in the selected districts <b>Baseline:</b> TBD <b>Target:</b> At least 300 women social and political leaders demonstrate</p>	<ul style="list-style-type: none"> <li>- Pre- and post-test assessment report</li> <li>- FGD report</li> </ul>	<ul style="list-style-type: none"> <li>-157 women leaders knowledge on UNSCRs 1325 and 1820 has been increased by 32.57 percent in five project VDCs in Bajhang.</li> <li>-Out of 35 trained women leaders, four trained women leaders demonstrated increased knowledge and skill on UNSCRs 1325 and 1820 in VDC level training in Bajhang.</li> </ul>	<p>-Project has increased the knowledge and understanding of UNSCRs 1325 and 1820 in the project district, more info in the relevance section of this report</p>

<sup>41</sup> Such as existing mother groups, CAC and women groups established by WCO

<sup>42</sup> Situation Analysis Focus Group Discussions

Results	Indicators	Means of Verification/Sources of Information	Progress	MTE Observations
	enhanced knowledge and understanding on USCRs 1325 and 1820 in selected districts			
<b>Output 3.3</b> Women leaders in the districts take on leadership roles to promote peace and development	<b>Indicator:</b> % of women leaders in various decision-making structures <b>Baseline:</b> % of women leaders occupy influential positions (2013) <b>Target:</b> At least 15% women leaders occupy influential positions by 2015	<ul style="list-style-type: none"> <li>- NAP Database</li> <li>- FGD report</li> <li>- Annual progress report</li> </ul>		<b>Not assessed by the MTE as per TOR</b>

### ANNEX III

#### KEY INFORMANT INTERVIEW WITH FOCAL PERSONS FROM THE BELOW MENTIONED GOVERNMENT AND NON-GOVERNMENT AGENCIES

List of Agencies	Kathmandu	Doti	Bajhang	Kailali
District Administration Office (DAO)		✓	✓	✓
District Development committee (DDC)		✓	✓	✓
District Police Office (DPO)/ Women and Children Service Centre		✓	✓	✓
Women and Children Office (WCO)		✓	✓	✓
Safe house		✓	✓	
Village Development Committee (VDC)			✓	
Embassy of Finland	✓	✓	✓	✓
Training Centre Nepal (TCN) in project district		✓	✓	✓
Local Peace Committee (LPC)		✓	✓	✓
Village level Local Peace Committee (VLPC)				✓
District partner (DHS/CDS/BASE)		✓	✓	✓
UN WOMEN field staff based in WCO		✓	✓	✓
Ministry of Women Children and Social Welfare	✓			
Department of Women and Children (DWC)	✓			
Ministry of Peace and Reconstruction	✓			
Ministry of Federal Affairs and Local Development	✓			
Local Development Training Academy (LDTA)	✓			
Training Centre Nepal (TCN) head office	✓			
Saathi	✓			
Search for Common Ground (SFCG)	✓			
UN WOMEN country office	✓			

## ANNEX IV

### MTE DETAILED FIELD ACTIVITY

District	Date	Activity	Place	Participants
Doti	6 <sup>th</sup> March 2015	KII	District Headquater (Silgadhi)	DCC members (CDOs, WDOs, LDOs, DPO In-charge, LPCs); VLPC
	7 <sup>th</sup> March 2015	FGD/ Survey	Sanagaun	CAWG (CAW&Gs, former women combatants, VAW survivors); IPWA, Project Beneficiaries ( CAW&G, former women combatants, IPWA)
	8 <sup>th</sup> March 2015	FGD/ Survey	Kadamandu	
Bajhang	10 <sup>th</sup> March 2015	KII	District Headquater (Chainpur)	DCC members (CDOs, WDOs, LDOs, DPO In-charge, LPCs); VLPC
	11 <sup>th</sup> March 2015	FGD/ Survey	Rithapatha	CAWG (CAW&Gs, former women combatants, VAW survivors); IPWA, Project Beneficiaries ( CAW&G, former women combatants, IPWA)
	12 <sup>th</sup> March 2015	FGD/ Survey	Subeda	
Kailali	14 <sup>th</sup> March 2015	FGD/ Survey	Masuria	CAWG (CAW&Gs, former women combatants, VAW survivors); IPWA, Project Beneficiaries ( CAW&G, former women combatants, IPWA)
	15 <sup>th</sup> March 2015	FGD/ Survey	Narayanpur	
	16 <sup>th</sup> March 2015	KII	FGD/ Survey	DCC members (CDOs, WDOs, LDOs, DPO In-charge, LPCs); VLPC

## ANNEX V

### SUMMARY OF TEAM'S ROLE AND RESPONSIBILITIES

S.N.	Position	Name	Roles and Responsibilities
1	Project Director (Non-fee earning input)	Mr. Shuva Kantha Sharma	<ul style="list-style-type: none"> <li>• Overall quality control of the project deliverables and services</li> <li>• Participate in the consultation workshop and key presentations</li> <li>• Participate in key meetings</li> </ul>
2	Team Leader	Ms. Sarita Karki	<ul style="list-style-type: none"> <li>• Lead the evaluation process and ensure quality and timely deliverables</li> <li>• Lead the team in undertaking the following activities:               <ul style="list-style-type: none"> <li>▪ Inception activities: Desk review, planning exercise, development &amp; finalization of methodology, data collection tools, evaluation questions, inception meeting with UN Women and reference group etc.</li> <li>▪ Supervise the team members</li> <li>▪ Kathmandu based interviews, consultations and meetings</li> </ul> </li> <li>• Participate in field visits in one district</li> <li>• Interpretation of data and findings</li> <li>• Preparation of all reports and their presentation (eg. Inception, Mid-term report)</li> <li>• Present report findings in report consultation workshop</li> <li>• Effectively communicate with UN Women Nepal Office, reference group and stakeholders.</li> </ul>
3	Team Member	Ms. Barsha Dharel	<ul style="list-style-type: none"> <li>• Provide <u>support to Team Leader</u> in the following:               <ul style="list-style-type: none"> <li>▪ Inception activities</li> <li>▪ Kathmandu based interviews, consultations and meetings</li> <li>▪ Interpretation of data and findings</li> <li>▪ Preparation of all reports and their presentation (eg. Inception, Mid-term report)</li> </ul> </li> <li>• Coordinate among evaluation team members and with the evaluation team leader</li> <li>• Carry out KII, interviews, consultations and FGDs in one district</li> <li>• Coordinate with relevant stakeholders for meetings, KII</li> <li>• Effectively communicate with UN Women Nepal Office, reference group and stakeholders</li> </ul>

4	Team Member/ Database Management Expert	Prakash Rai	<ul style="list-style-type: none"> <li>• Provide <u>support to Team Leader</u> in the following: <ul style="list-style-type: none"> <li>▪ Inception activities</li> <li>▪ Interpretation of data and findings</li> <li>▪ Preparation of all reports and their presentation (eg. Inception, Mid-term report)</li> </ul> </li> <li>• Consolidation of data/information from desk review and from field</li> <li>• Carry out KII, interviews, consultations and FGDs in one district</li> <li>• Data classification, systemization, management and analysis</li> </ul>
5	Team Member	Purushottm Ganwali	<ul style="list-style-type: none"> <li>• Provide <u>support</u> in the following: <ul style="list-style-type: none"> <li>▪ Inception activities</li> <li>▪ Preparation of all reports and their presentation (eg. Inception, Mid-term report)</li> <li>▪ Data classification, systemization, management and analysis</li> </ul> </li> <li>• Coordinate with relevant stakeholders for meeting, KII etc</li> <li>• Carry out KII, interviews, consultations and FGDs in one district</li> </ul>
6	Research Assistant	Stuti Sapkota	<ul style="list-style-type: none"> <li>• Manage required logistics: office space, administrative and secretarial support, telecommunications, printing of documentation, methodological tools etc during overall evaluation</li> <li>• Provide administrative/programme support to team members Make field visit arrangements</li> <li>• Support in organizing consultation workshop</li> <li>• Support in the coordination activities</li> <li>• Support for documentations</li> </ul>

**ANNEX VI**  
**DATA COLLECTION INSTRUMENT**  
**Survey Questionnaire**

**MID TERM EVALUATION OF STRENGTHENING IMPLEMENTATION OF THE  
WOMEN, PEACE AND SECURITY AGENDA IN  
NEPAL (SIWPSAN) PROJECT  
(RFP No. UNW/RFP/NPL/2014/008)**

**March 2015**

**Section 1: Introduction**  
**Household information**

Name		Caste/ Ethnicity	
District		Municipality/VDC/Ward	
Age		Marital Status	
Type of beneficiary		Gender	
Education		Occupation	

**Section 2: Knowledge and perception about Women Peace and Security**

Q. N.	Questions	Response
1	Do you have knowledge and understanding of Women, Peace and Security and its programme executed by UN Women?	A. Yes                      B No
2	If yes, how did you know?	A. District Coordination Committee B. Women Development Office C. CDS/DHS/BASE D. Any other I/NGO (specify, if known) E. Media (Local/National) F. Others (specify, if known)
3	If yes, what do you understand by women, peace and security?	<open ended>
4	If this programme has reached you through media, would this medium be effective to reach the target community?	A Yes                      B No                      C Don't know

**Section 3: Capacity development and Empowerment**

1	Have you received any training/orientation on Women, Peace and Security?	A. Yes                      B. No                      C Don't know
2	If yes, who provided the training/orientation?	A. District Coordination Committee B. Women Development Office C. CDS/DHS/BASE D. Any other I/NGO (specify, if known) E. Others (specify, if known)



3	Do you think that the training was sufficient and helped you in better understanding of Women, Peace and Security issues?	A. Yes B. No C. Don't Know
4	Have you ever received any kind of leadership training?	A Yes      B No
5	If yes, did the training helped you to enhance your or others leadership skills?	A Yes      B No      C Don't know
6	Have any women in your community achieved any leadership position in any organization or political party? (if no go to question no. 15)	A Yes      B No      C Don't know
7	If yes, which organization? ( <i>tick as many as appropriate</i> )	A. DCC    B. LPC      C. WCO D. IPWN   E. Political Party F. Cooperatives G. Consumer group    H. Women Alliances I. Others
8	If yes, which position? ( <i>tick as many as appropriate</i> )	A. Chairperson      B. Vice Chairperson C. Treasurer      E. Secretary F. Member      G. Other (Please Specify)
9	Do you think that there is active participation of women in these organisations/ committees? ( If no go to question no. 13)	A. Yes B. No C. Don't know
10	If yes, how strongly do they put their voices?	A. Strongly    B. Moderately    C. Not at all
11	If yes, are their voices heard?	A. Yes      B. No      C. Don't Know
12	If not, what could be the reasons?	A. Less women representation B. Lack of confidence/ hesitation C. Male domination D. Lack of awareness E. Lack of interest F. Don't know
13	Are there any women related association/alliance/organizations in your community? (If no go to question no. 17)	A Yes B No C Don't know
14	If yes, what types of organization/alliance/ association?	A Inter Party Women Alliance B Conflict Affected Women Groups C Mothers Groups D Women Consumer Group E Women's Cooperatives F Other please specify
15	Are these organizations actively functioning?	A Yes      B No      C Don't know
16	Are these organizations active in fundraising or seeking resources to support women related programs?	A Yes      B No      C Don't know
17	Have you received any skills development/income generation training? (If no go to section 4)	A Yes B No
18	If yes what type of training did your receive?	A Mobile repairing B Computer training C Agricultural farming D Candle making

		E Sewing and stitching F Bag and shawl looming G Bio briquette making H Others			
19	Was the training according to your need? (If no go to question no. 24)	A Yes B No C Don't know			
20	If yes, did this training helped you to improve your livelihoods?	A Yes B No C Don't know			
21	If yes, are you satisfied with that training?	A Yes		B No	
22	If no, what are the reasons?	Open ended			
23	Do you have any suggestions for the improvement of the training program that you've received?	<open ended>			
<b>Section 4: Violence Against Women (VAW)</b>					
1	Have you experienced or ever heard about any incidence of VAW in your community?	A. Yes B. No			
2	If you have experienced or you know of any kind of VAW in your community, what was the consequence noted after the incidence?	A. Health issues B. Psychological/ mental trauma C. Loss of livelihoods D. Social stigma E. Others (specify)			
3	Are you aware of the reporting process related to VAW incidences?	A. Yes		B. No	
4	Existing laws and policy mechanism are effective in the prevention and justice of violence against women.	<b>AGRE E</b>	<b>DISAGREE</b>	<b>MAY BE</b>	<b>NO IDEA</b>
	It has been easier for a woman to report an incident of VAW				
	It was found that perpetrators have been punished by the legal system in VAW cases				
	Do you or survivors of VAW have easy access at the government offices (DPO, DAO, WCO etc) for reporting the cases?				
	Behavior of the government authorities in dealing with VAW cases are not partial and are gender sensitive/friendly				
5	Are there any relief services (e.g. counselling) for women who face VAW in this community?	A. Yes	B. No	C. Don't know	
6	Is there an easy access to safe houses and/or Women and Children Service Centers support for the survivors of VAW?	A Yes	B No	C. Don't know	
<b>Section 5: Gender Equality and Social Inclusion</b>					
1	Are there any kind of awareness raising program (implemented by the project) related to gender equality in your community?	A Yes	B No	C. Don't know	
2	If yes, do you think that the program helped in increasing awareness on these issues?	A Yes	B No	C. Don't know	
3	Do you know that Men and Women have equal rights (Gender equality Act 2063)	A Yes	B No	C. Don't know	
4	Do you know that women have equal property rights?	A Yes	B No	C. Don't know	
5	In your community mostly who are the owner of the property?	A Male		B Female	

6	If mostly male, what could be the reasons?	A. Lack of awareness B. Male domination C. Cultural and traditional barriers D. Local practices E. Less interest of female F. Others
7	Do you know free legal aid is available from the government in cases of trafficking, sexual exploitation and domestic violence	A Yes    B No    C. Don't know
8	Have you or do you know of anyone who has been excluded from various social and political activities in the past year for being former combatants and/or conflict affected groups?	A Never    B. Once    C. A few times D Often    E. NA
<b>Section 6: Perceived impact</b>		
1	Has your economic and social condition improved as a result of the project? (only applicable to CAW&G, ex-combatants and survivors of VAW)	A Yes                      B No
2	In your community are conflict affected women and female ex-combatants experiencing any kind of insecurity?	A Yes                      B No                      C Don't know
3	How safe do you feel in your community? (CAW&G, Ex-combatants, VAW)	A Very safe    B Fairly safe C Not safe    D Don't know (present context)
4	If not safe, what kind of insecurity are there?	A Life threat              B Torture C Beating                  D Verbal abuse E Others
5	Being an ex-combatant what do you want to contribute for the nation? (Only applicable to former women combatants)	<Open ended>
6	Being an ex-combatants what do you expect from the nation? (Only applicable to former women combatants)	<open ended>
7	In this present context what is your prominent need?	<open ended>
8	Did you receive any kind of relief and rehabilitation support?	A Yes                      B No                      C Don't know
9	If yes, what kind of support you received?	A Relief Aid              B Livelihood              C Psychosocial D Reconciliation/ community mediation E Health facility    F Legal Aid    G Education H Others (Specify)
10	Are you satisfied with the support provided?	A Yes                      B No
11	Do you feel that other conflict-related issues (such as property issue) have been adequately addressed?	A Yes                      B No
12	How likely it is for the country to return to violent conflict again?	A High                      B Medium C Low                      D Don't know
<b>Section 7:Sustainability</b>		
1	Do you feel this program is appropriate or as per your need?	A Yes                      B No                      C Don't Know

2	<i>If yes, what may be the reason? (chosed as many as applicable)</i>	A. Enhanced livelihoods B. Capacity Development C. Leadership skills D. Reconciliation E. Others (please specify)
3	<i>If no, what may be the reason? (chosed as many as applicable)</i>	A. Not according to needs B. Not relevant C. Not useful D. Not practical E. Others ( please specify)
4	Are there any possibilities of sustaining the programme at local level even after the completion of this programme?	A. Yes B. No C. Not necessary D. Cannot say
5	<i>If yes, could you please elaborate the reasons?</i>	<Open Ended>
6	<i>If no, could you please elaborate the reasons?</i>	<Open Ended>
7	What do you think are ways to the improvement of the programme?	<Open Ended>
<b>Section 8: Efficiency and effectiveness</b>		
1	Could you state some of the positive aspects of the programme?	<Open Ended>
2	What are the weak points in the programme?	A. Weakness in management B. Lack of skilled human resources C. Lack of proper monitoring and evaluation D. Lack of a responsible person for the programme E. Others please specify

### Check List for KII and Consultations for

#### Mid Term evaluation of Strengthening Implementation of the Women Peace and Security Agenda in Nepal (SIWPSAN) Project

##### A) KII at the Central Level

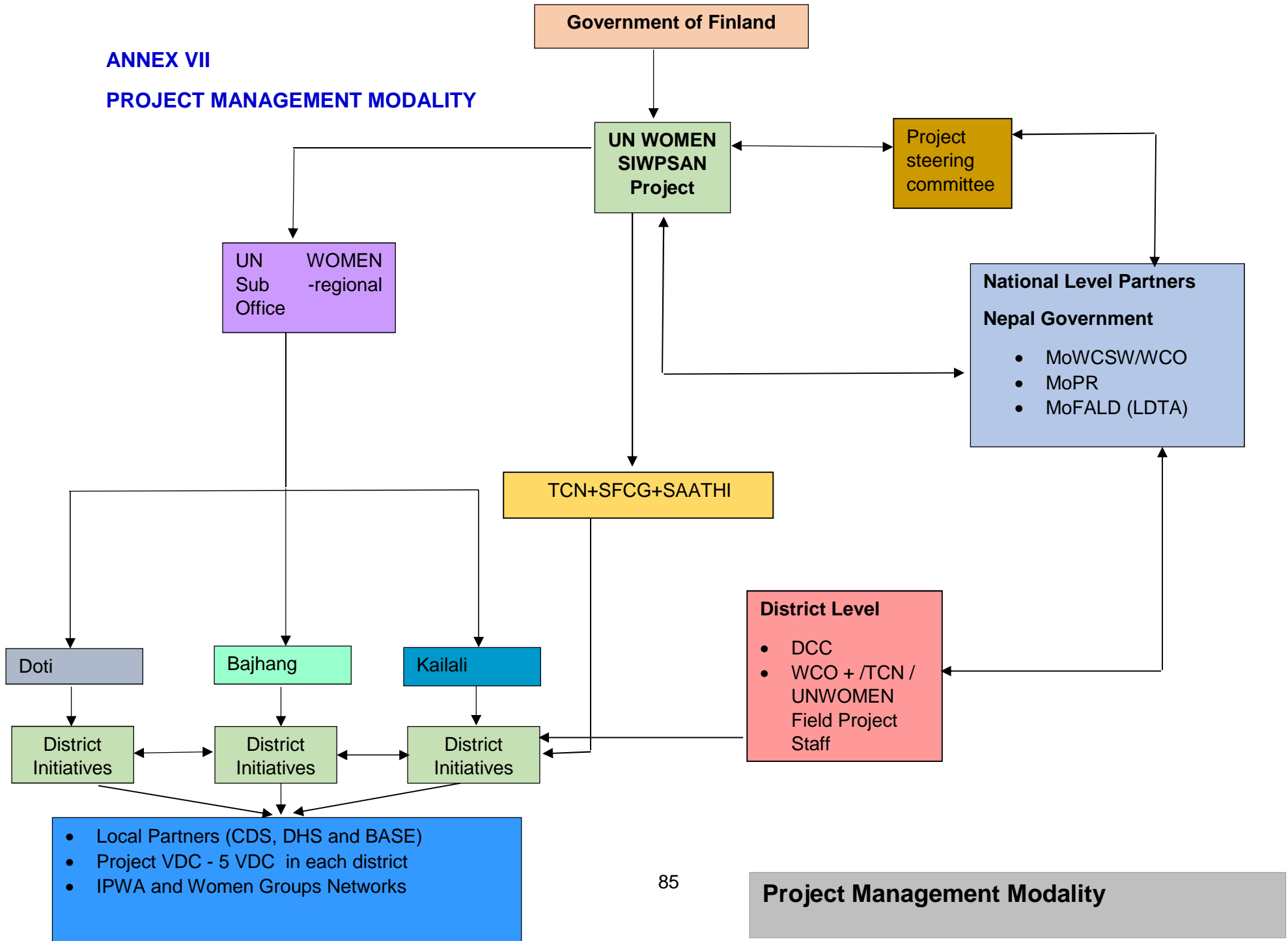
- Implementation mechanism
- Coordination mechanism and follow up at the central
- Progress up to the date
- Activities carried out and achievement made
- Monitoring mechanism

- Types of benefit received by beneficiaries and stakeholders
- Capacity of stakeholder strengthened
- Participants selection mechanism and criteria
- Types of risk identified
- Cost effectiveness measures
- Sustainability of the project activities and achievements
- What type of changes achieved
- Challenges faced so far
- Best practices

**B) KII/FGD at the District Level**

- Level of coordination among the NAP stakeholder
- Meeting organized/frequency of meeting
- Monitoring visit carried out and follow up mechanism
- Sense of ownership of the stakeholder
- Cost effective measures taken
- Performance of gender unit established at WCO
- Leadership or capacity enhanced of the CAW&Gs
- Increased representation and participation
- Formation of women groups and networks
- Knowledge enhanced on NAP 1325 & 1820
- Positive and negative changes received (livelihood improved)
- Any entrepreneurship running by beneficiaries
- Capacity of local stakeholder strengthened
- Inclusive measures taken
- Status of office equipment and training materials
- IEC material published and information dissemination mechanism
- Status of SGBV - cases increased/decreased- solution provided
- Socio economic rehabilitation and reintegration of CAWGs and female ex-combatants
- Safe house service and psychosocial counseling
- Implementation problem faced

**ANNEX VII**  
**PROJECT MANAGEMENT MODALITY**



## **ANNEX VIII**

### **LIST OF KEY DOCUMENTS CONSULTED/ REVIEWED**

- Contractual agreements and ToRs of partners of SIWPSAN project
- Implementing Locally, Inspiring Globally: Localizing UNSCR 1325 in Colombia, Nepal, the Philippines, Sierra Leone and Uganda, Global Networks for Women Peacebuilders, November 2013
- Mapping of projects and program interventions for conflict affected people in Nepal supported by NPTF and key development partners, SW Nepal, November 2014
- Meeting minutes/ Records
- National Action Plan on Implementation of the United Nations Security Council Resolution 1325 & 1820 (2011/12-2016-17), Government of Nepal, 1st February 2011
- National Action Plan on Implementation of the United Nations Security Council Resolution 1325 & 1820, Mid-term Monitoring Report, Ministry of Peace and Reconstruction and 1325 Action Group/Saathi, October 2014
- Nepal National Action Plan on Implementation of the United Nations Security Council Resolution 1325 & 1820, First Year Monitoring Report, Ministry of Peace and Reconstruction and Saathi 2012
- Project document- Strengthening Implementation of the Women, Peace and Security Agenda in Nepal: Towards Implementation of the National Action Plan on UNSCRs 1325 and 1820
- Relief and Rehabilitation Program, Ministry of Peace and Reconstruction, 2066 (November 2009)
- Situation of Women and Girls in Conflict Affected Districts (Kailali, Doti and Bajhang), Search for Common Ground, April 2013
- Strengthening Implementation of the Women, Peace and Security Agenda in Nepal: Towards Implementation of the National Action Plan on UNSCRs 1325 and 1820, District partners' Progress reports, 2013-2015

- Third Party Monitoring Reports, Nepal Peace Trust Fund, Ministry of Peace and Reconstruction, May 2011-June 2014

## ANNEX IX

### LIST OF REFERENCE GROUP

- Ministry of Peace and Reconstruction (MoPR)
- Ministry of Women Children and Social Welfare (MoWCSW)
- Department of Women and Children (DoWC)
- Local Development Training Academy (LDTA)
- Search for Common Ground (SFCG)
- Embassy of Finland
- UN WOMEN

## ANNEX X

### METHODOLOGY FOR CALCULATING SAMPLE SIZE

[[ Sample Size based on Cochran Methods  $n_0 = (Z^2 * pq) / e^2$

Where

Z value at 90% of confidence level (Z) = 1.645

Margin of error (e) = 5%

Maximum Variability (p) = 0.5

Determinant calculated by using 1-p (q) = 0.5

Required sample size calculated based on Cochran methods of representative sample (n0) =?

Based on above equation we find  $n_0 = 270.6025$

Sample Size needed  $n_1 = n_0 * (1 + \frac{1}{N})$

Where,

Required Sample Size (n1) =?

Total number of project beneficiaries in the sample VDCs = 373

Based on the above equation, we find  $n_1 = 157$



## ANNEX XI

### FINANCIAL STATUS (AS OF MAY 2015) RECEIVED FROM UN WOMEN

<b>1. Contracts signed and Expenditure of partners</b>			
<i>Contract signed</i>	<i>Amount in USD</i>	<i>Total Amount Expended</i>	<i>Amount Remaining to be expended</i>
Dalit Help Society (DHS)	67228	31116	36112
Backward Society Education (BASE)	73043	29704	43339
Creative Development Society (CDS)	81980	38557	43423
Ministry of Women, Children and Social Welfare (MOWCSW)	141234	56783	84451
Training Centre Nepal (TCN)	188804	108572	80232
Search for Common Ground for monitoring	26516	3491	23025
Local Development Training Academy (LDTA)	6000	0	6000
SAATHI	67827	0	67827
Search for Common Ground for knowledge product	46043	0	46043
Krishna Consultancy Pvt. Ltd.	14746	1475	13271
SW Nepal	26885	2688	24197
<b>Total</b>	<b>740306</b>	<b>272386</b>	<b>467920</b>
<b>Financial Update</b>			
<b>2. Cash received details from Finland</b>			

<b>Descriptions</b>	<b>Amount (in US\$)</b>	<b>Amount (in EURO)</b>	<b>Fund Revived Date</b>
First installment received	167,701.86	135,000.00	25 June 2012 - (EURO 135,000.00) - for inception phase - US\$ 1.00 = EURO 1.24
Second installment received	456,323.34	350,000.00	25 July 2013 - (EURO 350,000 for implementing phase) - US\$ 1.00 = EURO 1.30
Third installment received	700,680.27	515,000.00	26 June 2014 - US\$ 1.00 = EURO 1.36
Installment received from EE project	321000	285690.00	30 March 2015 - US\$ 1.00 = EURO 0.89
<b>TOTAL FUND RECEIVED</b>	1645705	1,285,690.00	
Remaining fund to be received from donor	401,722.53	300,000.00	

### 3. Financial Update (as of March 2015))

<b>Budget Heading</b>	<b>Available budget in USD</b>	<b>Expenditure: May 2012 - March 2015</b>	
<i>Programme Cost (Central and district level)</i>	1,292,300	412,733	
<i>Human Resources</i>	533,667	214,865	
<i>Administrative expenses (including equipment and furniture, other direct cost, security cost and 7% administrative cost)</i>	221,461	151,916	
<i>Total</i>	2,047,428	779,514	

<b>4. Other Financial Information</b>			
<b><i>Particulars</i></b>	<b><i>USD</i></b>	<b><i>% out of received fund</i></b>	
Total Project budget	2,047,428	100	
Total Fund received	1,645,705	80	
Remaining fund to be received from the Donor	401,723	20	
Current expenditure rate as of March 2015	779,514	47	
Projected expenditure rate for end 2015	1,329,514	81	

## Annex XII

### Proposed revision in the project indicators

Output	Existing Indicators and target	Proposed revision in indicators and target	Justification for proposed revision
<p><b>Output 2.2:</b> Increased public awareness on NAP and women's participation in peace, security and governance processes in select project districts</p>	<p><b>Output indicator 2.2.1:</b> % of general public who say that they have heard of or know about NAP in select districts.</p> <p><b>Target:</b> 25% of local residents of select 15 VDCs aware of NAP; 25% of respondents of five VDCs in each district say they know about UNSCRs 1325, 1820 and NAP by 2015; 40 % increase in the general public in select districts reporting that they have access to materials related to UNSCRs 1325, 1820 and NAP by 2015</p>	<p><b>Output indicator 2.2.1:</b> % of general public from the project VDCs who say that they know about NAP in select districts.</p> <p><b>Target:</b> 25% of respondents of five VDCs in each district say they know about UNSCRs 1325, 1820 and NAP by 2015.</p>	<p>Knowing is higher level result than awareness.</p>
<p><b>Output 2.4:</b> Conflict affected women and former women combatants have enhanced entrepreneurial capacity to pursue</p>	<p><b>Output indicator 2.4.1:</b> % of conflict affected women and former women combatants trained on entrepreneurship development.</p>	<p><b>Output indicator 2.4.1:</b> % of conflict affected women and former women combatants in the project VDCs trained on entrepreneurship development.</p>	<p>The project is implemented in 15 VDCs of three districts.</p>

<p>improved and sustainable livelihoods in the select VDCs</p>	<p><b>Target:</b> At least 30% of conflict affected women and former women combatants in the select VDCs will be trained on entrepreneurship development by 2015.</p>	<p><b>Target:</b> At least 30% of conflict affected women and former women combatants in the select VDCs will be trained on entrepreneurship development by 2015.</p>	
<p><b>Output 2.5:</b> Improved relationship between conflict affected women, former women combatants and communities in project districts</p>	<p><b>Output indicator 2.5.1:</b> % of conflict affected women and former women combatants who report that they have been accepted by the communities in selected districts.</p> <p><b>Target:</b> 50% conflict affected women and former women combatants report that they have been accepted by the community.</p>	<p><b>Output indicator 2.5.1:</b> % of conflict affected women and former women combatants who report that they have been accepted by the communities in the project VDCs.</p> <p><b>Target:</b> 50% conflict affected women and former women combatants report that they have been accepted by the community in the project VDCs.</p>	<p>It is recommended to make the indicators more specific by mentioning 'project VDCs' instead of 'district'.</p>
<p><b>Output 2.6:</b> Accessible, prompt and quality services available to the victims/survivors of violence against women.</p>	<p><b>Output indicator 2.6.1:</b> %of women reporting incidence of SGBV.</p> <p><b>Target:</b> Only 5% women report case of domestic violence and 2 % women report cases of sexual harassment by 2015</p>		<p>Suggest removing the existing indicator. It is less likely that the project activities will contribute to decrease the reporting of SGBV.</p>

	<p><b>Output indicator 2.6.2:</b> % of victims /survivors of SGBV that are able to access safe houses, and Women and Children Service Centres support.</p> <p><b>Target:</b> At least 20% victims/survivors of SGBV access quality support services from shelter houses, and Women and Children Service Centres.</p>	<p><b>Output indicator 2.6.2:</b> % of victims /survivors of violence against women that are able to access safe houses and Women and Children Service Centres support.</p> <p><b>Target:</b> at least 50% of victims/survivors of violence against women who visit the shelter house or Women and Children Service Center experiences getting support services (psychosocial, legal, logistic, medical etc) from shelter houses in Bajhang district and Women and Children Service Centre in 3 project districts.</p>	<p>The project targeted beneficiaries are women, hence suggest replacing the SGBV with Violence Against Women (VAW). The target has been revised to match the project activity.</p>
<p><b>Output 3.3:</b> Women leaders in the districts take on leadership roles to promote peace and development</p>	<p><b>Output indicator 3.3.1:</b> % of women leaders in various decision-making structures.</p> <p><b>Target:</b> At least 15% women leaders occupy influential positions by 2015.</p>	<p><b>Output indicator 3.3:</b> % of women beneficiaries of the project who occupy influential positions in various decision-making structures in the project VDCs.</p> <p><b>Target:</b> At least 15% women leaders occupy influential positions in various decision-making structure in the project VDCs by 2016.</p>	<p>Chairperson, Treasurer and Secretary positions are influential position. The decision making structure at local level includes Local peace committee (LPC); Ward citizen forums (WCF); Inter party alliance; District Coordination committees(DCC); Community Forestry User Groups; Citizen Awareness Center (CAC), School Management Committee, Federation/alliances/coalitions of CSOs/NGOs, District Red Cross Society and so on.</p>